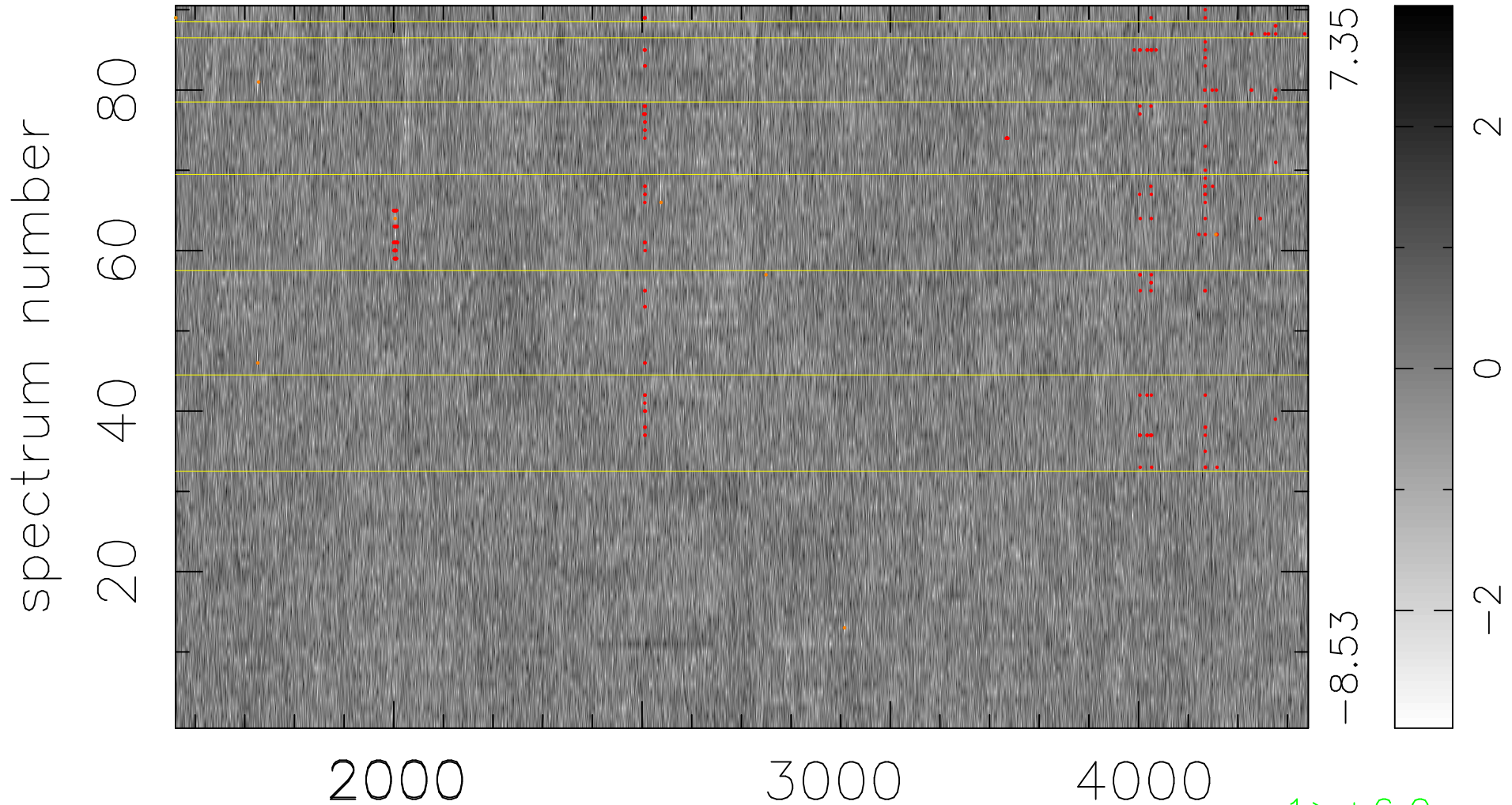


$$\chi(\lambda, t) = ( \text{Data} - \text{Model } \text{AC}_5\text{B}_3\text{F} ) / \sigma \chi$$

$$\chi^2 / (410670 - 5108) = 0.917 \Rightarrow 1.008$$

4563x90



bad:213=0.052%  $\lambda$  (Å)  $z = 1.21494$

1 > +6.0 $\sigma$

8 < -6.0 $\sigma$