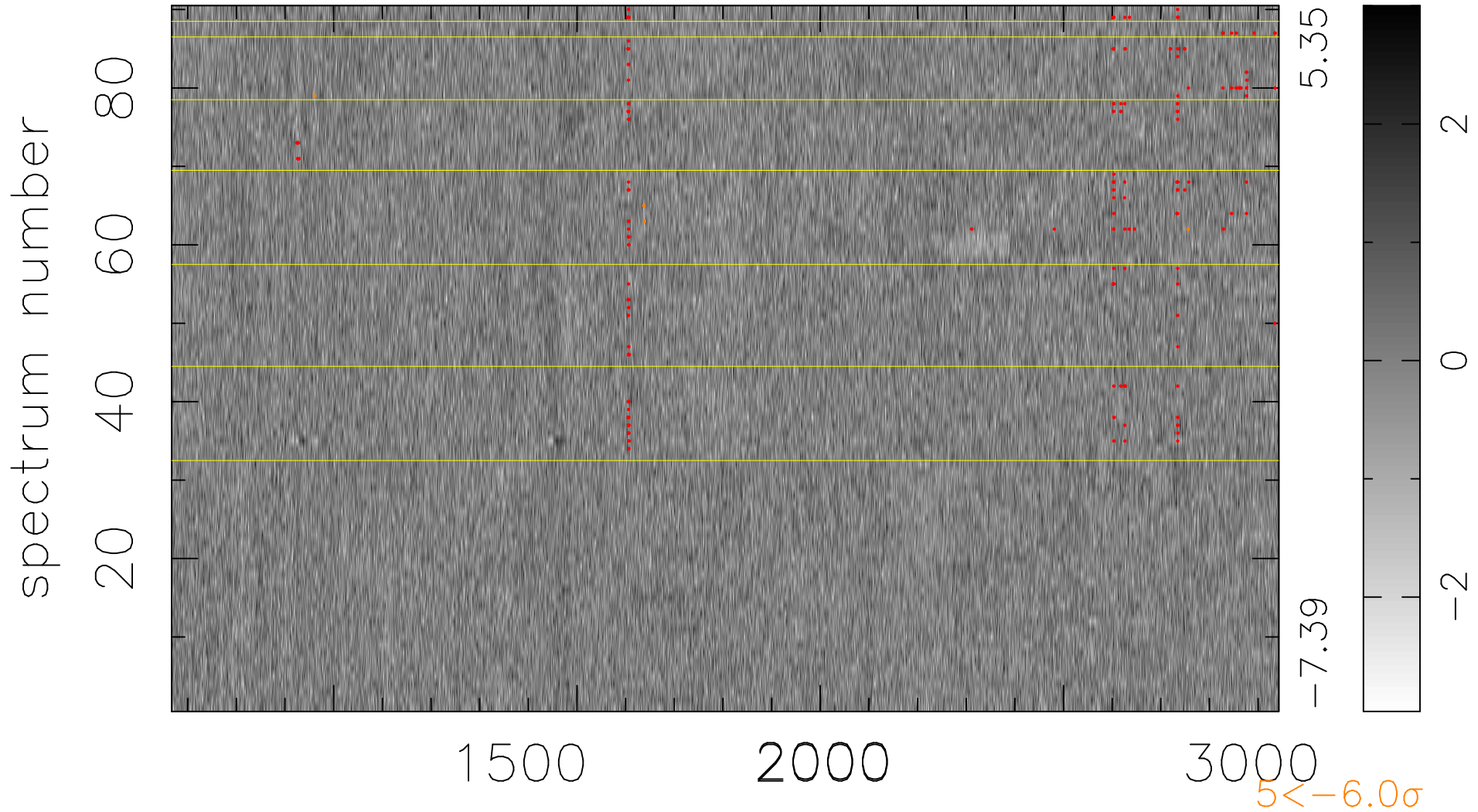


$$\chi(\lambda, t) = ( \text{Data} - \text{Model } \text{AC}_5\text{B}_7\text{F} ) / \sigma \chi$$

$$\chi^2 / (409680 - 5506) = 0.940 \Rightarrow 1.008$$

4552x90



bad:192=0.047%  $\lambda$  (Å)  $z = 2.35196$