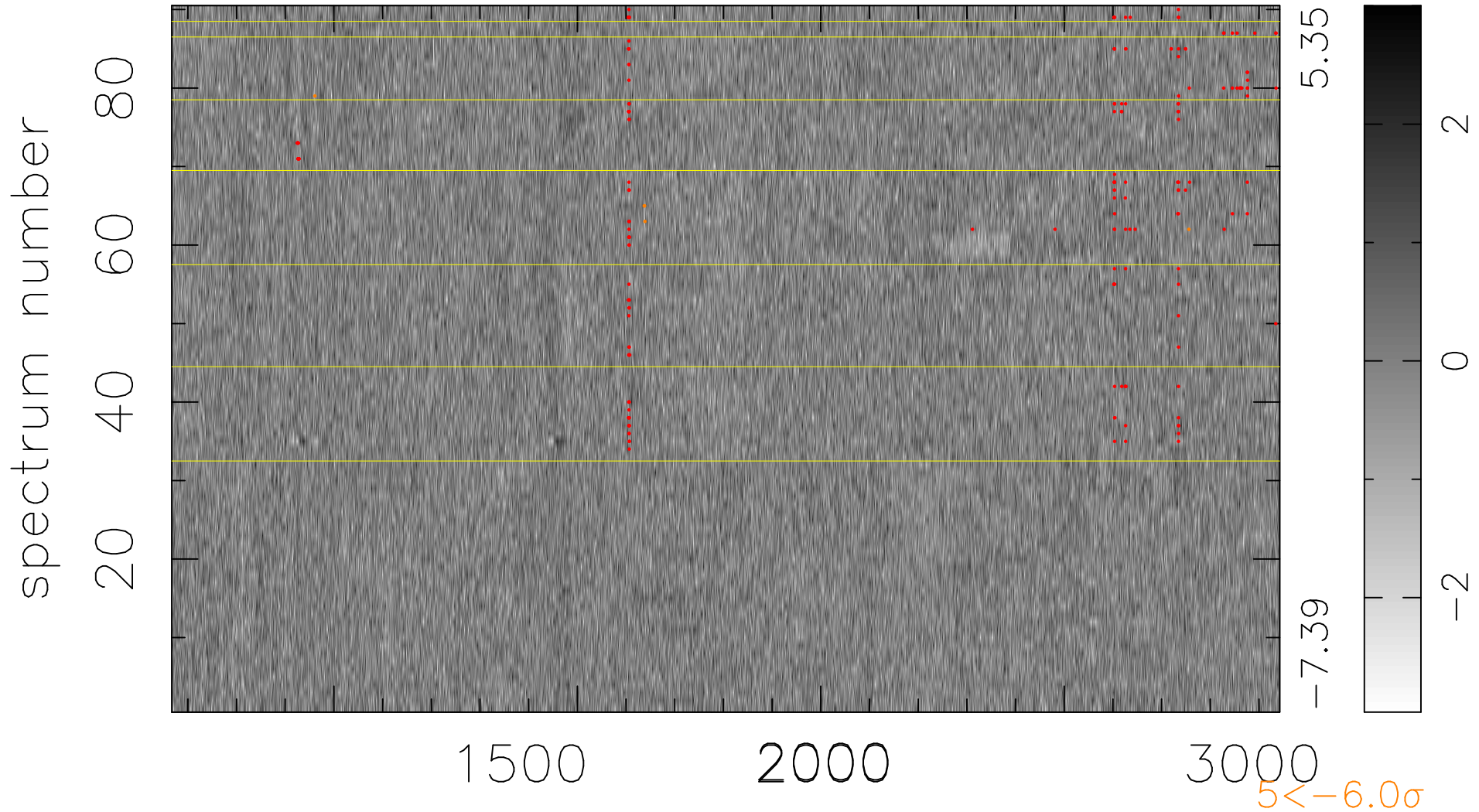


$$\chi(\lambda, t) = (\text{Data} - \text{Model } \text{AC}_5\text{B}_7\text{F}) / \sigma \chi$$

$$\chi^2 / (409680 - 5506) = 0.940 \Rightarrow 1.008$$

4552x90



bad:192=0.047% λ (Å) $z = 2.35196$