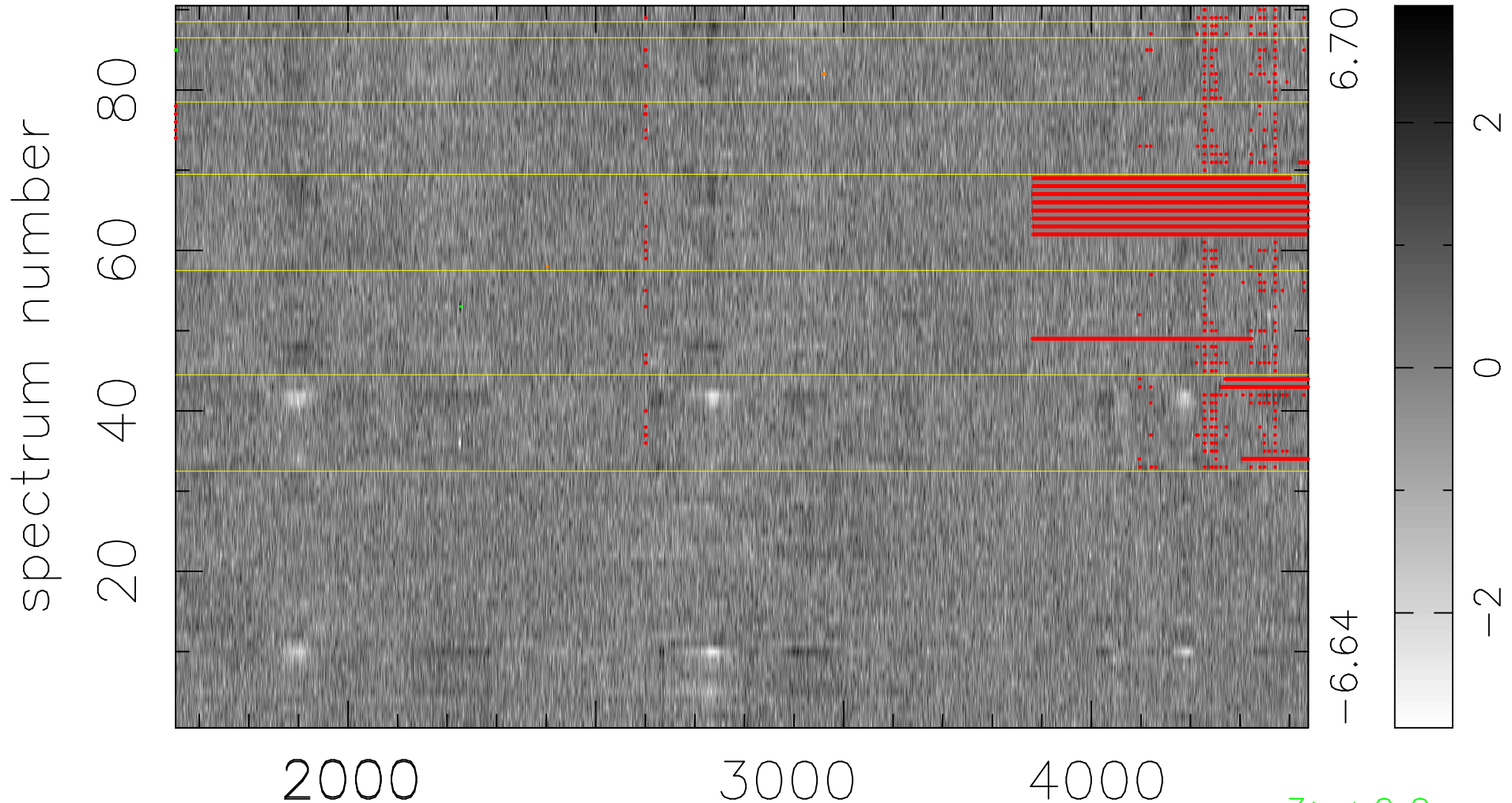


$$\chi(\lambda, t) = (\text{Data} - \text{Model AC}_5\text{F}) / \sigma \chi$$

$$\chi^2 / (411480 - 5049) = 0.901 \Rightarrow 1.008$$

4572x90



bad:11155=2.7% λ (Å) $z = 1.12019$

3 > +6.0 σ

6 < -6.0 σ