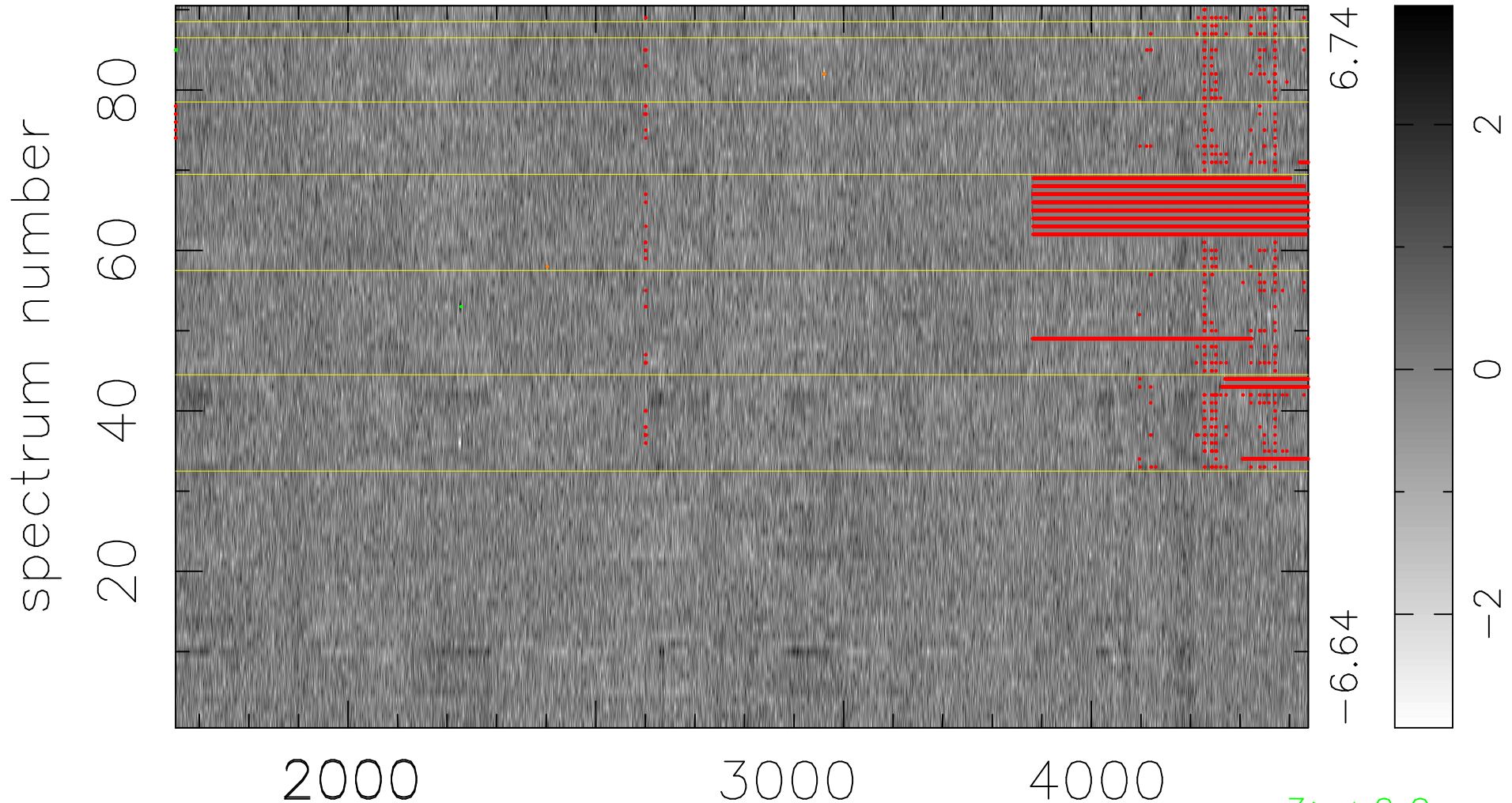


$$\chi(\lambda, t) = ( \text{Data} - \text{Model } \text{AC}_5\text{B}_4\text{F} ) / \sigma \chi$$

$$\chi^2 / (411480 - 5227) = 0.886 \Rightarrow 1.009$$

4572x90



bad:11155=2.7%  $\lambda$  (Å)  $z = 1.12019$

3 > +6.0σ

6 < -6.0σ