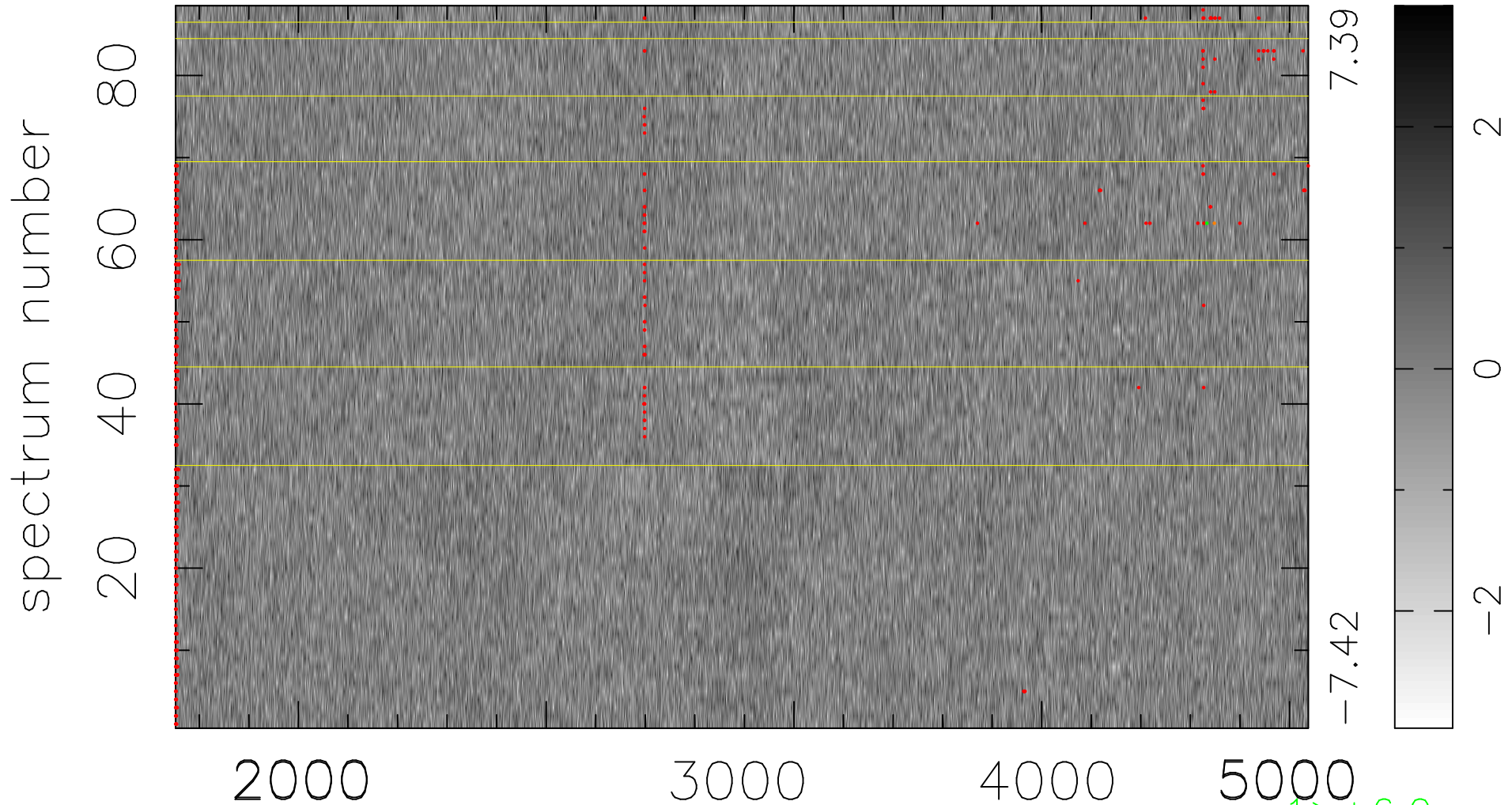


$$\chi(\lambda, t) = (\text{Data} - \text{Model } \text{AC}_5\text{B}_4\text{F}) / \sigma \chi$$

$$\chi^2 / (402336 - 5229) = 0.896 \Rightarrow 1.008$$

4572x88



7.39
-7.42

bad:530=0.13%

λ (Å) $z = 1.02695$

$1 > +6.0\sigma$

$1 < -6.0\sigma$