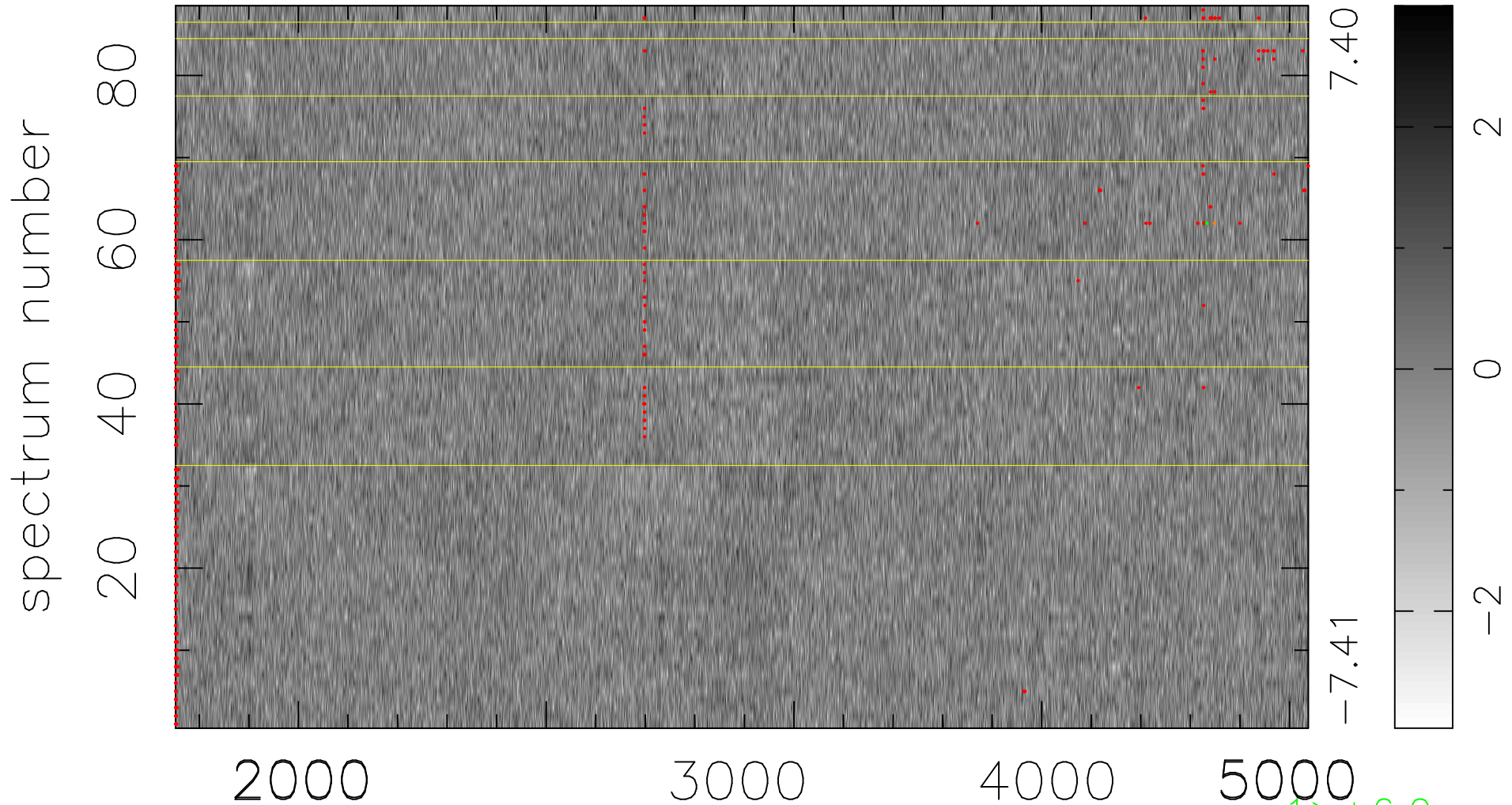


$$\chi(\lambda, t) = (\text{Data} - \text{Model AC}_5\text{F}) / \sigma \chi$$

$$\chi^2 / (402336 - 5056) = 0.900 \Rightarrow 1.008$$

4572x88



bad:530=0.13%

λ (Å) $z = 1.02695$

$\uparrow > +6.0\sigma$

$\downarrow < -6.0\sigma$