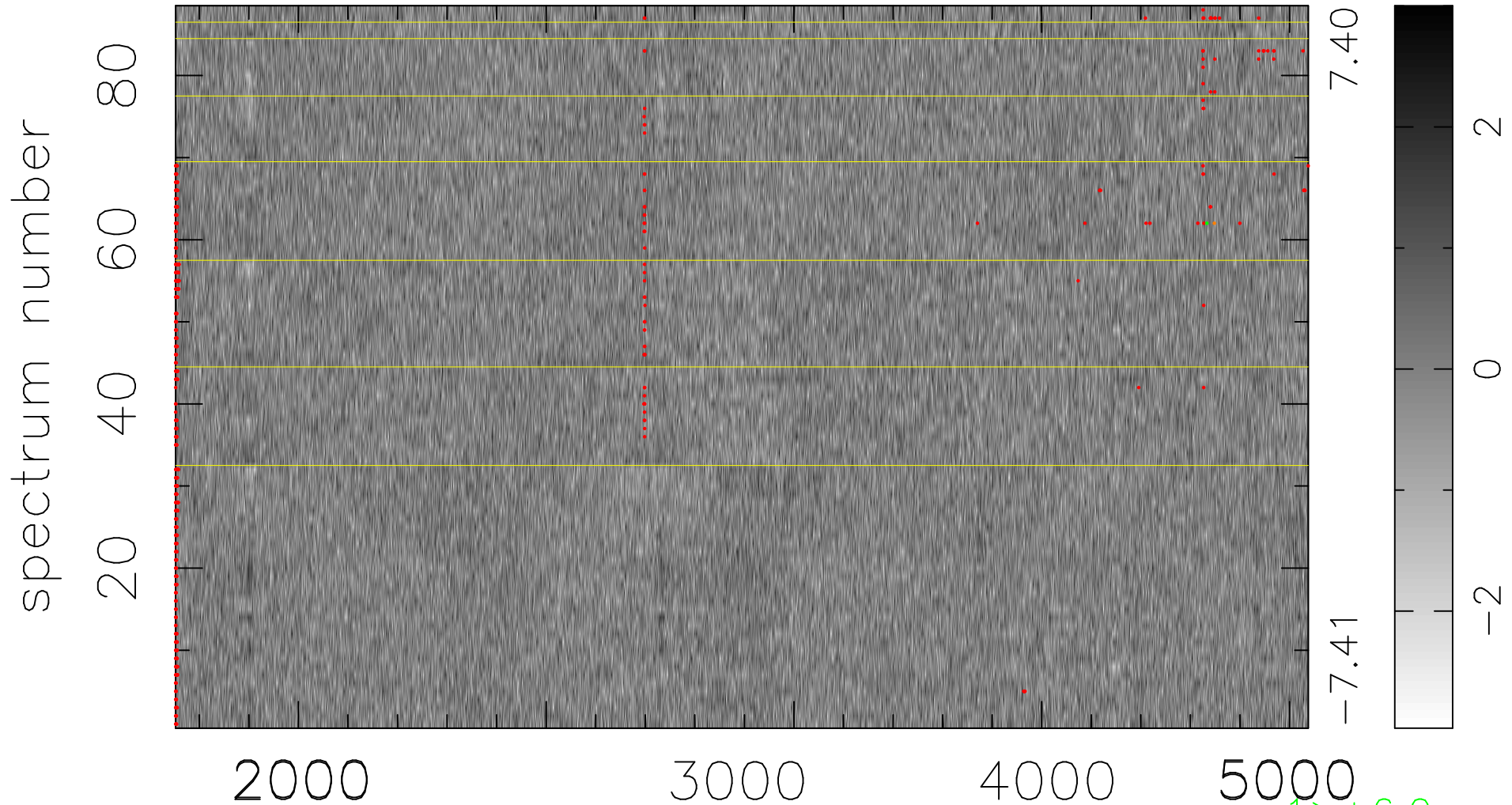


$$\chi(\lambda,t) = (\text{Data} - \text{Model } AC_5) / \sigma \chi$$

$$\chi^2 / (402336 - 4968) = 0.901 \Rightarrow 1.008$$

4572x88



bad:530=0.13%

λ (Å) $z = 1.02695$

$1 > +6.0\sigma$

$1 < -6.0\sigma$