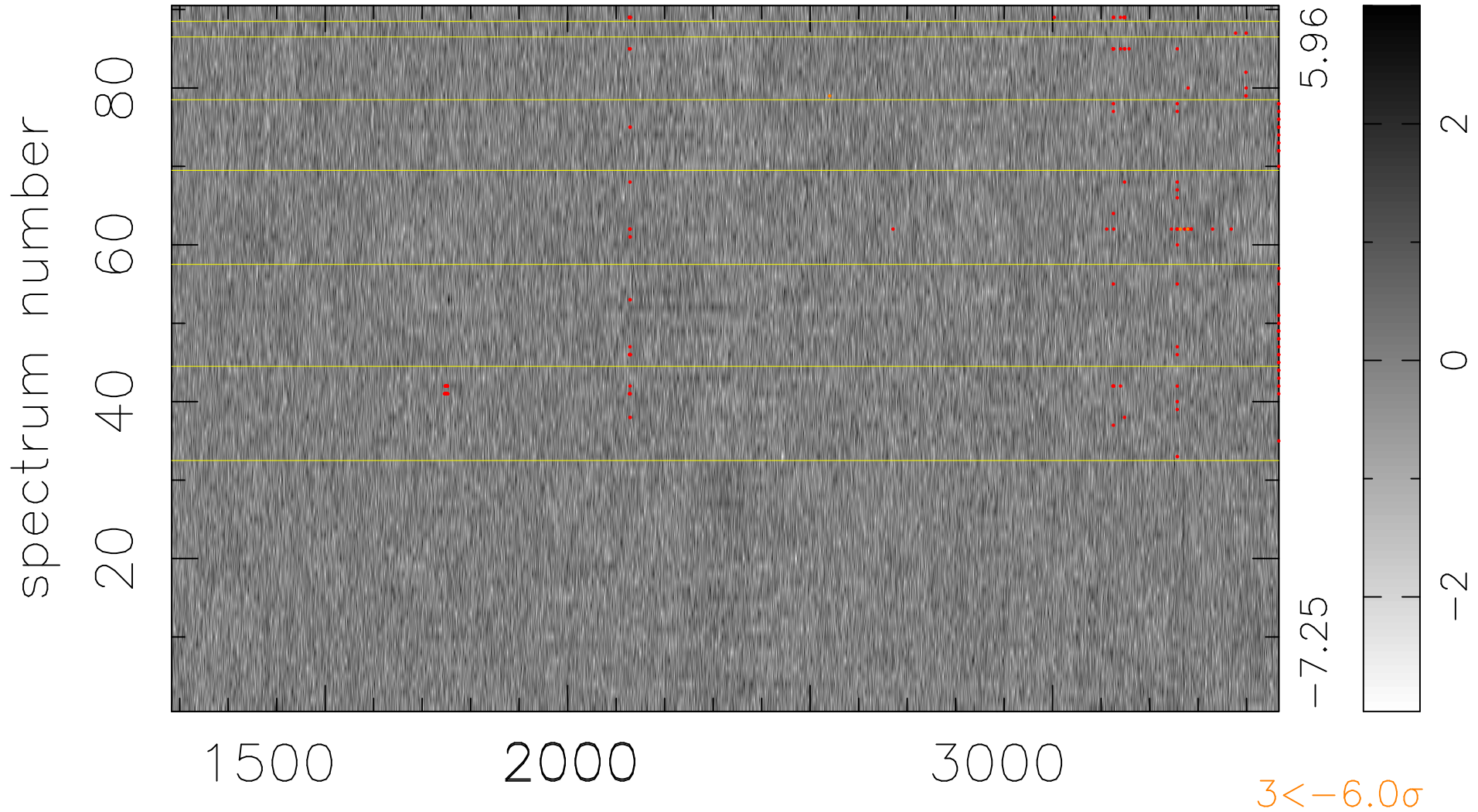


$$\chi(\lambda, t) = ( \text{Data} - \text{Model } \text{AC}_5\text{B}_5\text{F} ) / \sigma \chi$$

$$\chi^2 / (411030 - 5261) = 0.888 \Rightarrow 1.007$$

4567 × 90



bad:155=0.038%  $\lambda$  (Å)  $z = 1.63515$