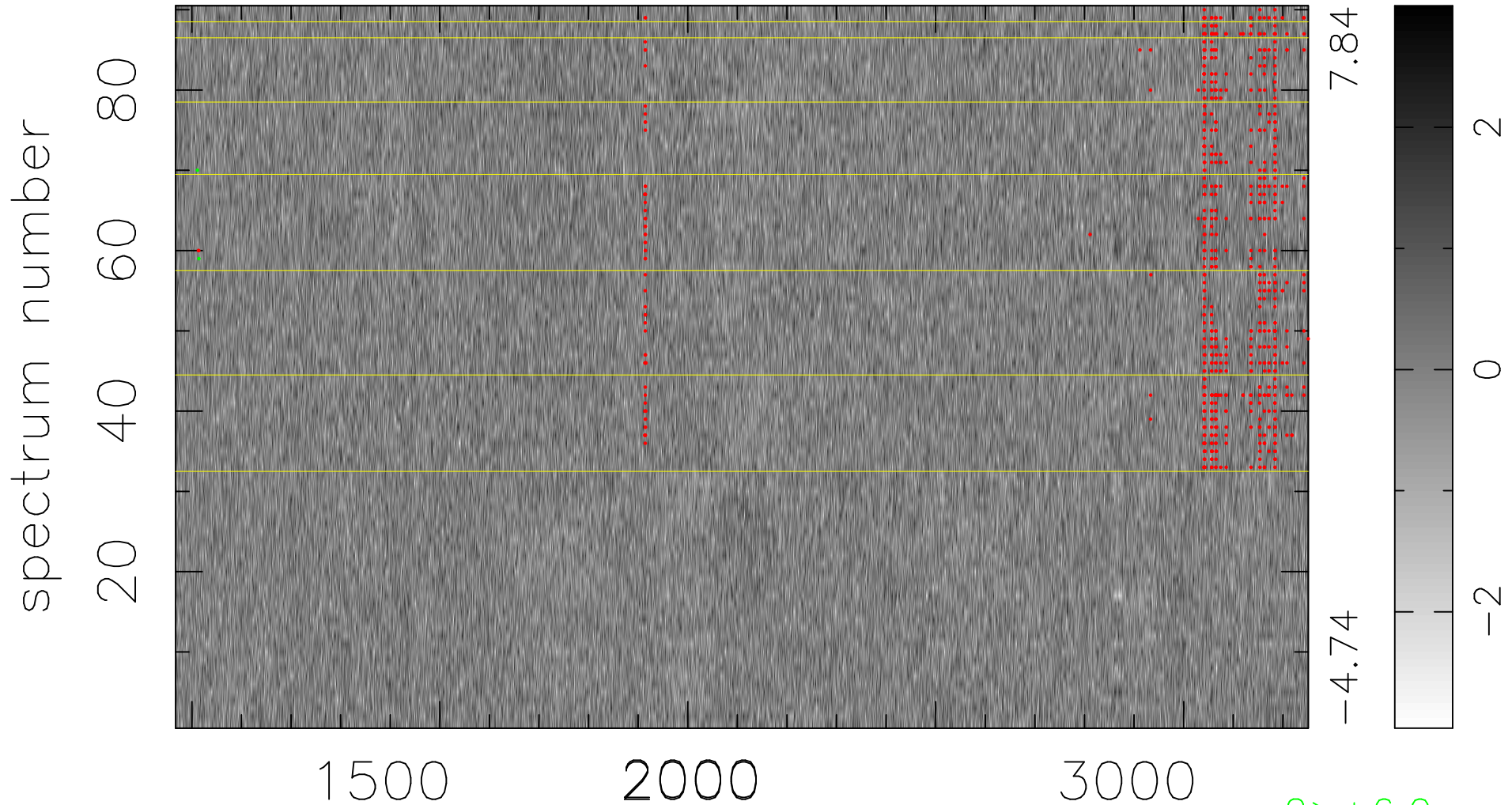


$$\chi(\lambda, t) = ( \text{Data} - \text{Model } \text{AC}_5\text{B}_6\text{F} ) / \sigma \chi$$

$$\chi^2 / (411210 - 5439) = 0.877 \Rightarrow 1.008$$

4569x90



bad:654=0.16%

$\lambda$  (Å)  $z = 1.90833$

2 > +6.0 $\sigma$