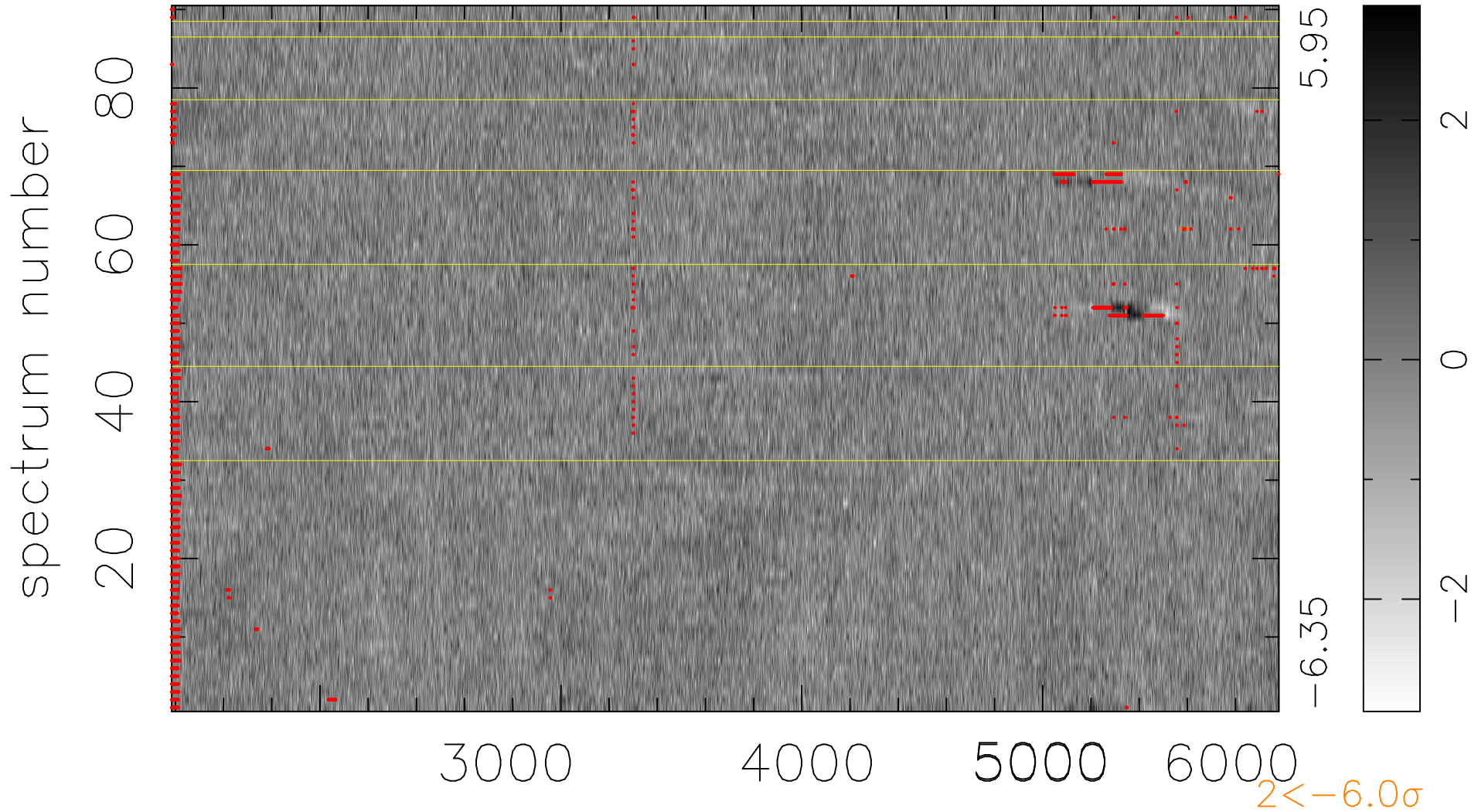


$$\chi(\lambda, t) = ( \text{Data} - \text{Model } \text{AC}_5\text{B}_3\text{F} ) / \sigma \chi$$

$$\chi^2 / (413640 - 5156) = 0.882 \Rightarrow 0.998$$

4596 × 90



bad:2907=0.70%  $\lambda$  (Å)  $z = 0.64605$