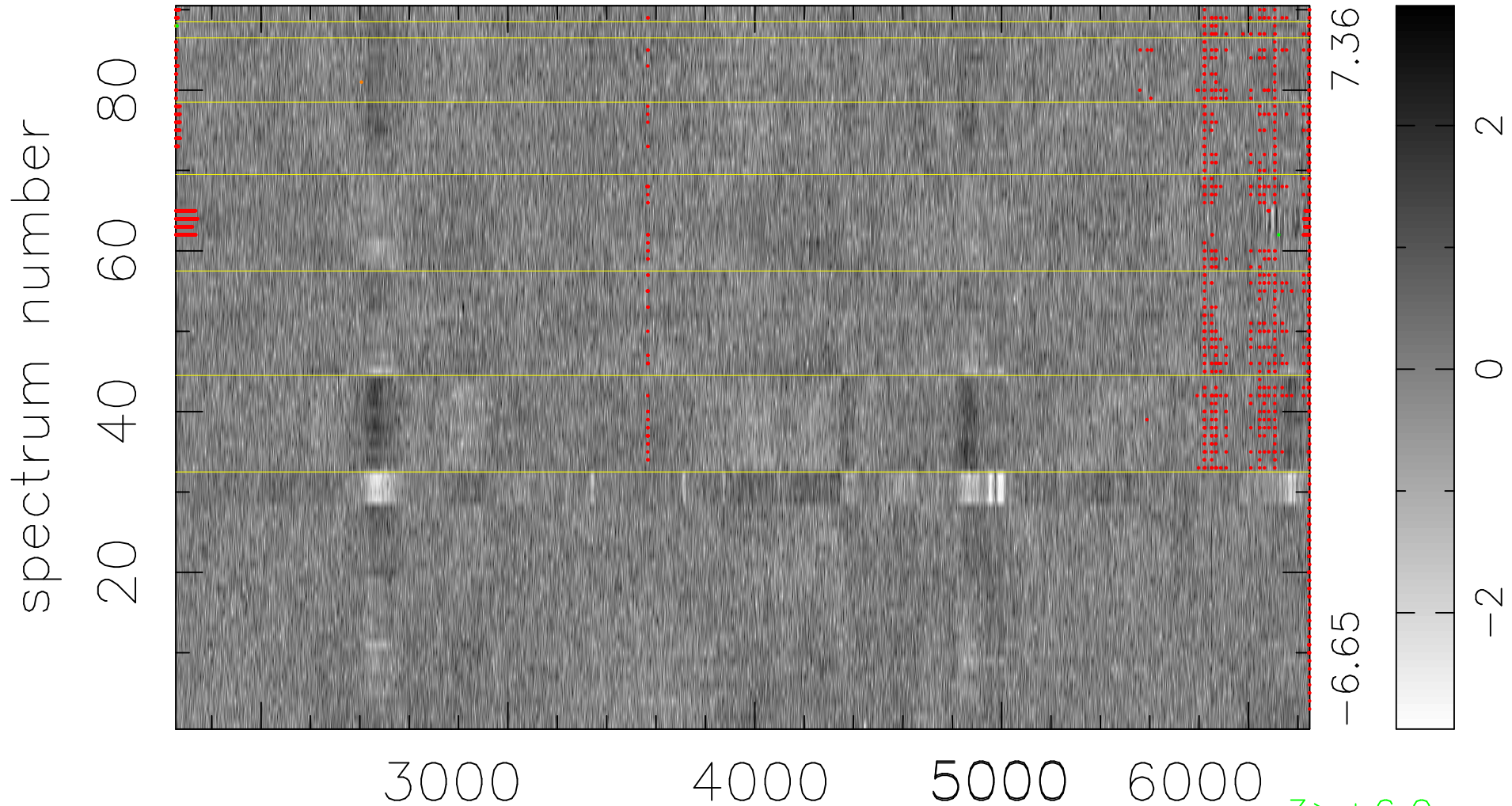


$$\chi(\lambda,t) = (\text{Data} - \text{Model } AC_5) / \sigma \chi$$

$$\chi^2 / (413460 - 4975) = 0.954 \Rightarrow 1.004$$

4594x90



bad:1515=0.37% λ (Å) $z = 0.54823$

3 > +6.0σ
3 < -6.0σ