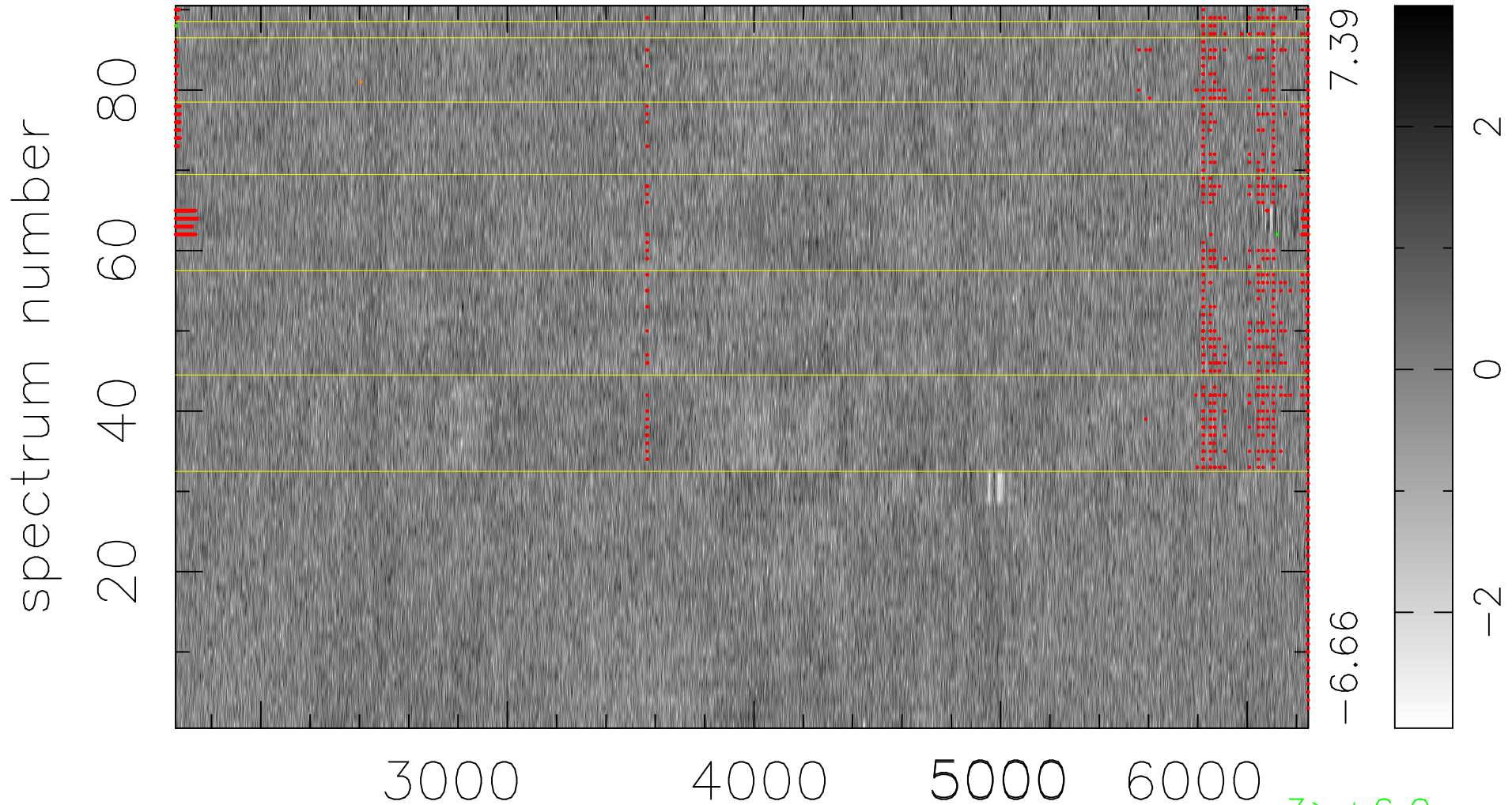


$$\chi(\lambda, t) = (\text{Data} - \text{Model } \text{AC}_5\text{B}_4\text{F}) / \sigma \chi$$

$$\chi^2 / (413460 - 5198) = 0.896 \Rightarrow 1.006$$

4594x90



bad:1515=0.37% λ (Å) $z = 0.54823$

3 > +6.0 σ

2 < -6.0 σ