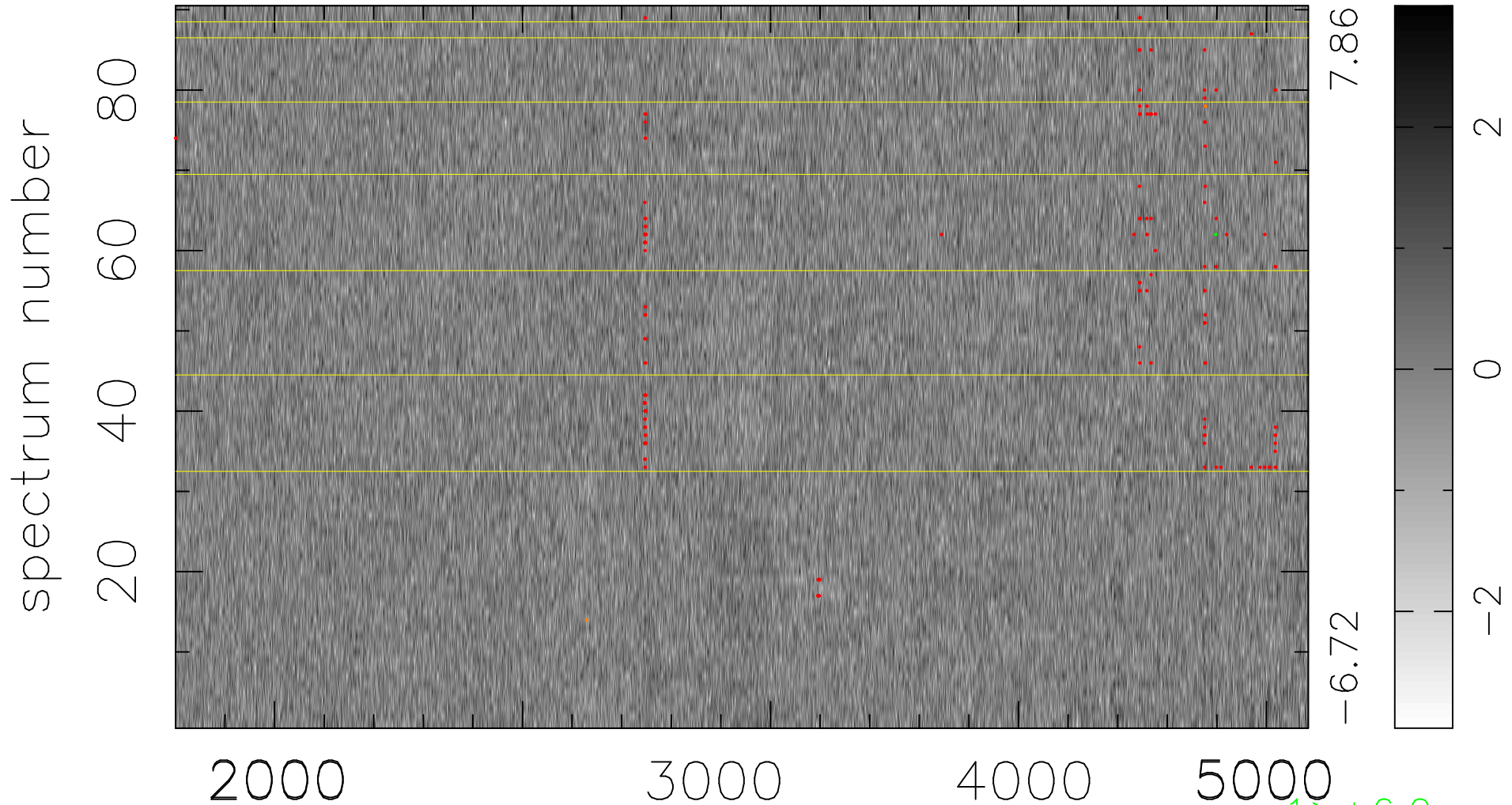


$$\chi(\lambda, t) = (\text{Data} - \text{Model } \text{AC}_5\text{B}_4\text{F}) / \sigma \chi$$

$$\chi^2 / (411120 - 5215) = 0.923 \Rightarrow 1.007$$

4568x90



7.86

-6.72

2

0

-2

1 > +6.0σ

2 < -6.0σ

bad:159=0.039% λ (Å) z = 0.98143