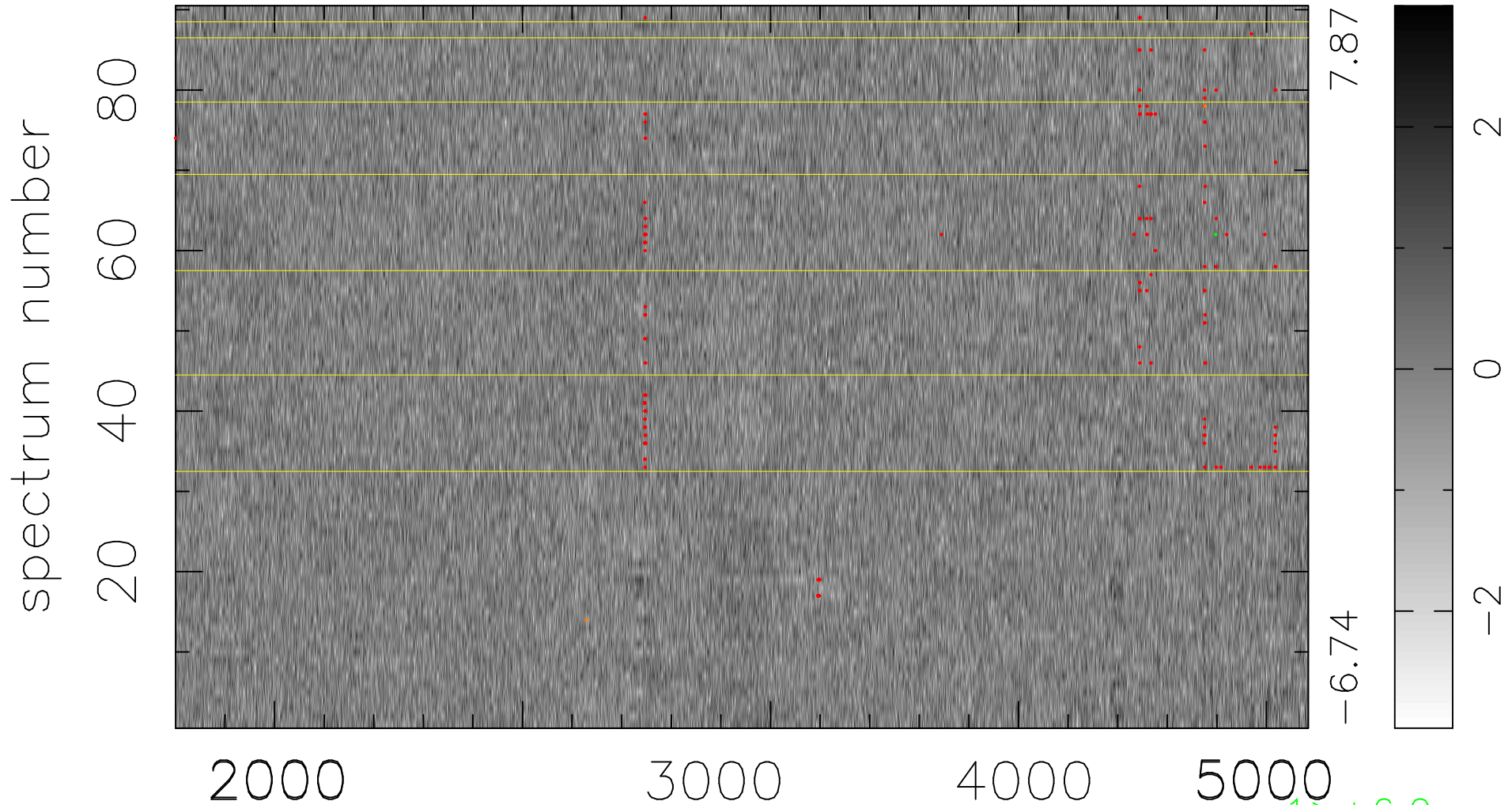


$$\chi(\lambda, t) = (\text{Data} - \text{Model AC}_5\text{F}) / \sigma \chi$$

$$\chi^2 / (411120 - 5049) = 0.927 \Rightarrow 1.007$$

4568x90



bad:159=0.039% λ (Å) $z = 0.98143$

1 > +6.0 σ

2 < -6.0 σ