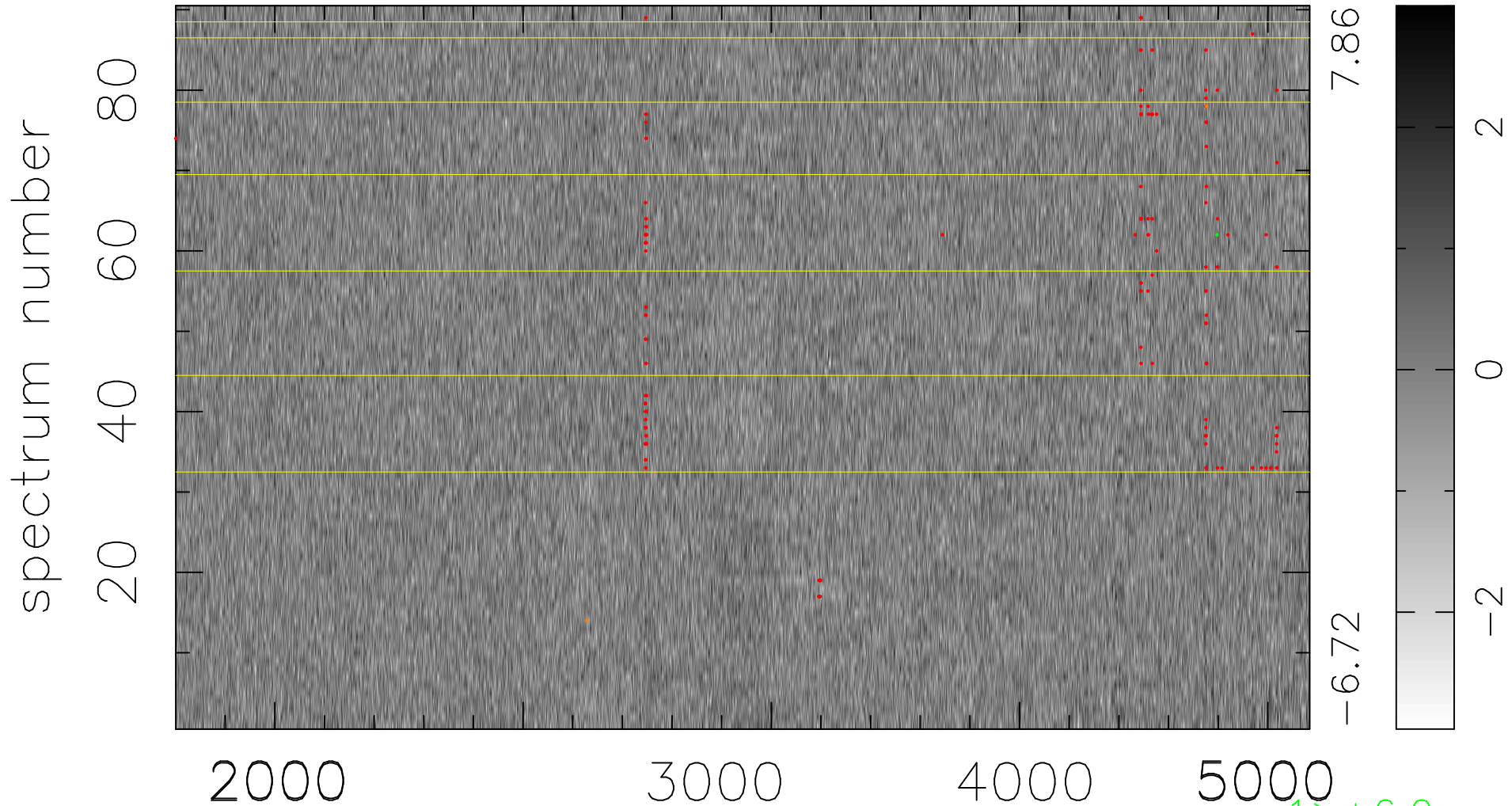


$$\chi(\lambda, t) = ( \text{Data} - \text{Model } \text{AC}_5\text{B}_4\text{F} ) / \sigma \chi$$

$$\chi^2 / (411120 - 5215) = 0.923 \Rightarrow 1.007$$

4568x90



bad:159=0.039%  $\lambda$  (Å)  $z = 0.98143$

1 > +6.0 $\sigma$

2 < -6.0 $\sigma$