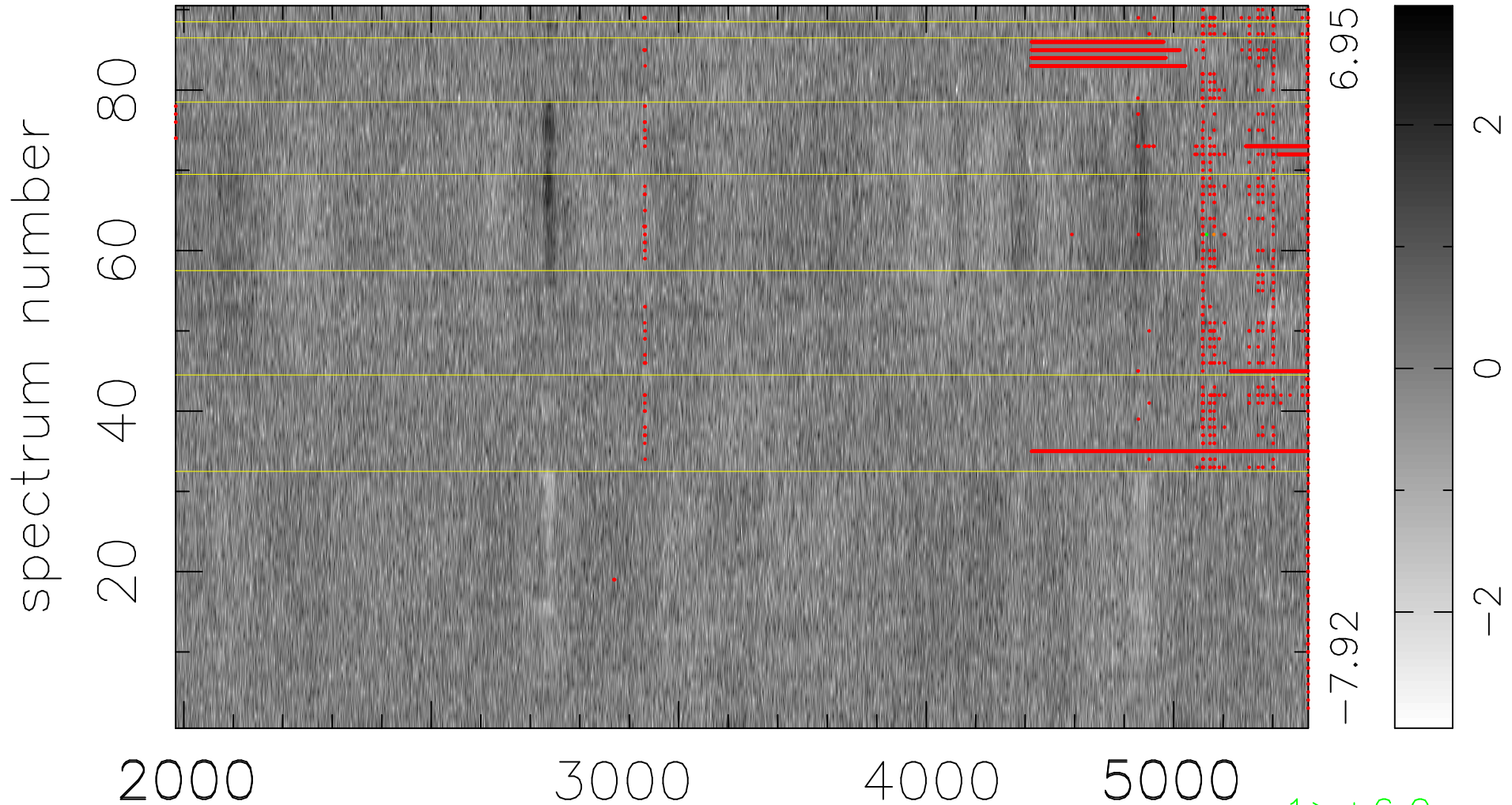


$$\chi(\lambda,t) = (\text{Data} - \text{Model } AC_5) / \sigma \chi$$

$$\chi^2 / (412020 - 4872) = 0.925 \Rightarrow 1.007$$

4578x90



6.95

-7.92

2

0

-2

bad:4994=1.2%

λ (Å) $z = 0.82058$

1 > +6.0σ
1 < -6.0σ