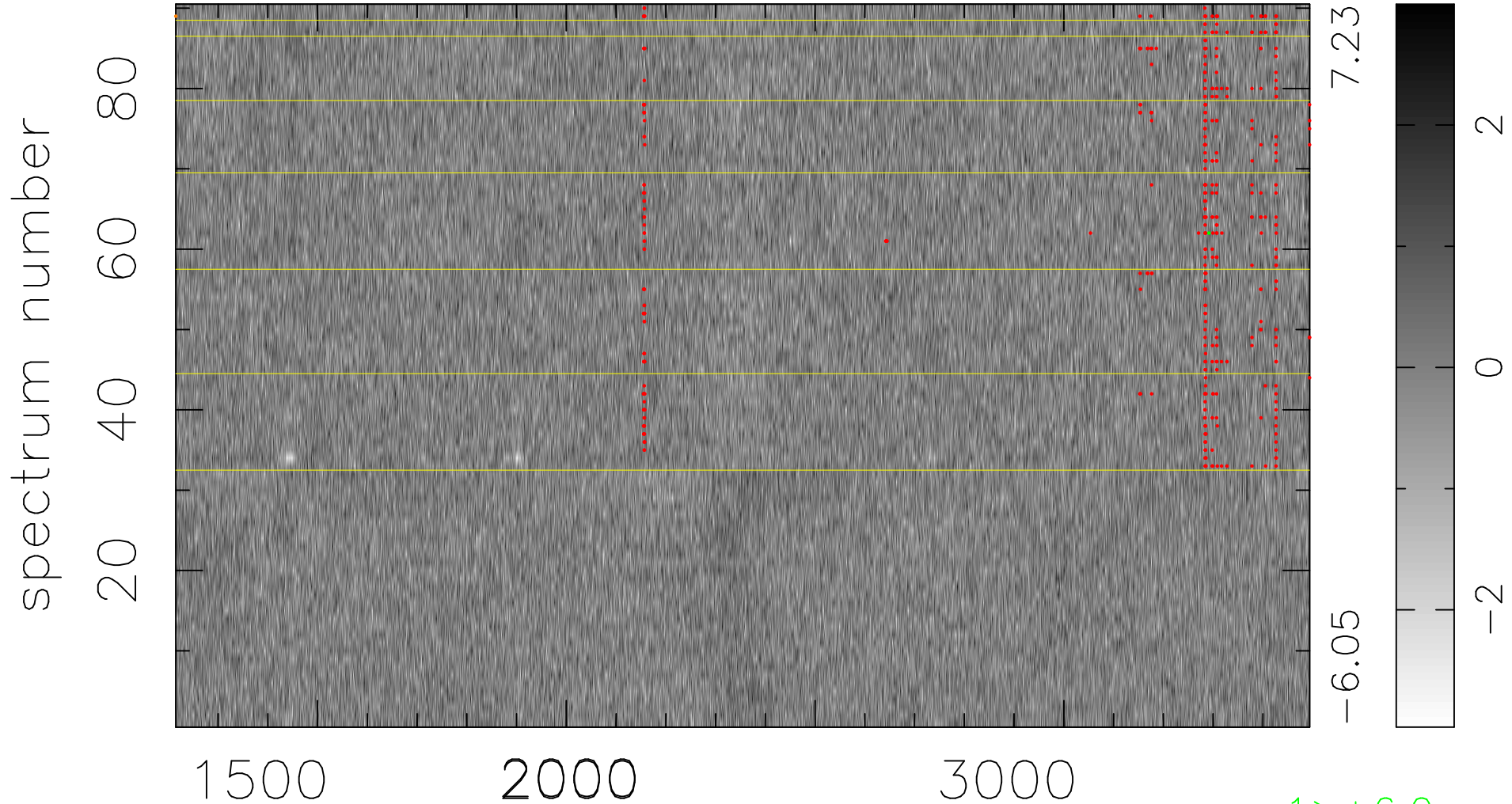


$$\chi(\lambda,t) = ( \text{Data} - \text{Model } AC_5 ) / \sigma \chi$$

$\chi^2 / (410310 - 5047) = 0.935 \Rightarrow 1.007$

4559x90



bad:419=0.10%

$\lambda$  (Å)  $z = 1.60133$

1 > +6.0σ

1 < -6.0σ