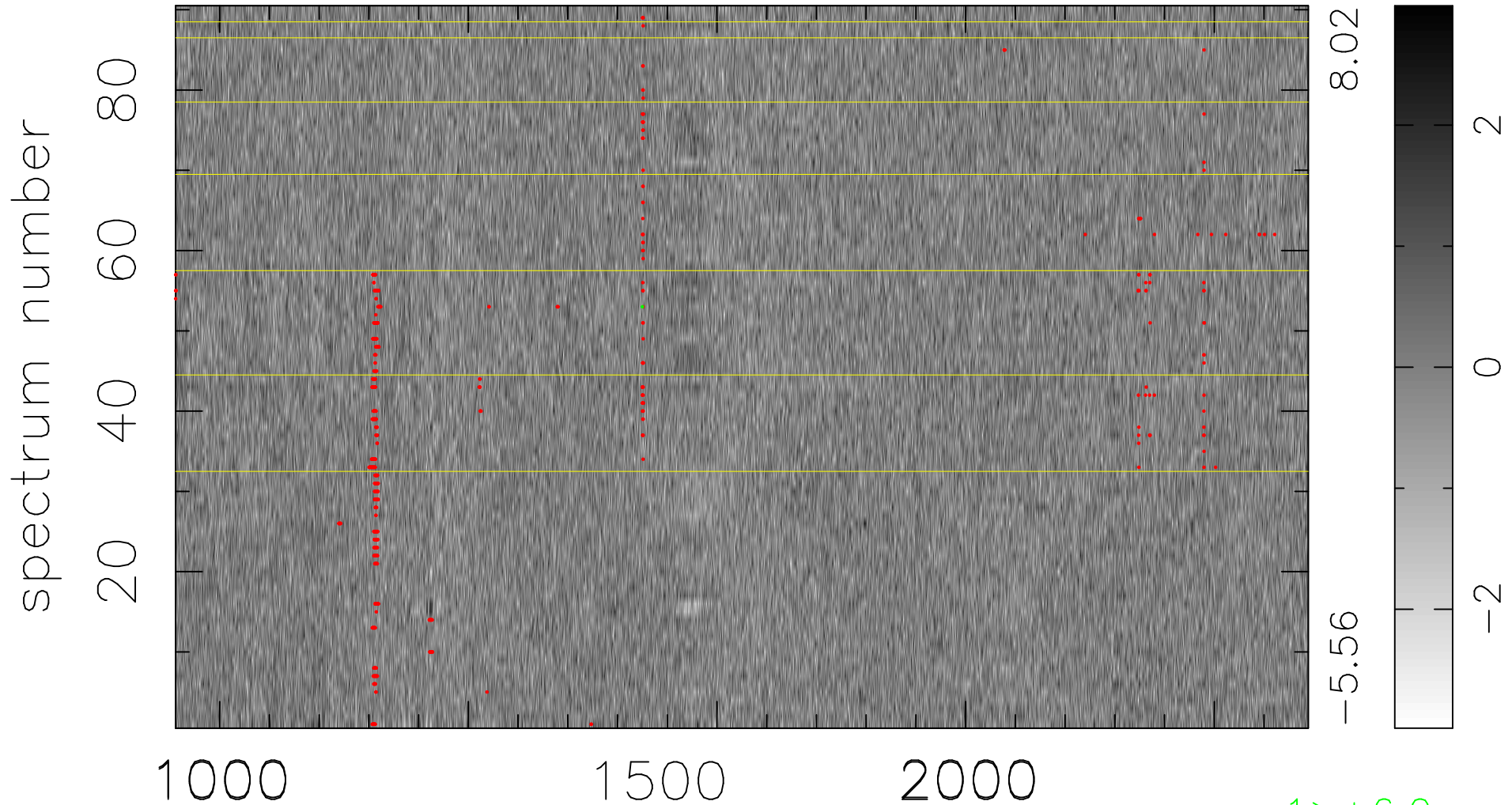


$$\chi(\lambda, t) = (\text{Data} - \text{Model } \text{AC}_5\text{B}_6\text{F}) / \sigma \chi$$

$$\chi^2 / (410040 - 5368) = 0.912 \Rightarrow 1.008$$

4556x90



8.02
-5.56

2
0
-2

bad:634=0.15%

λ (Å) $z = 2.76974$

1 > +6.0σ