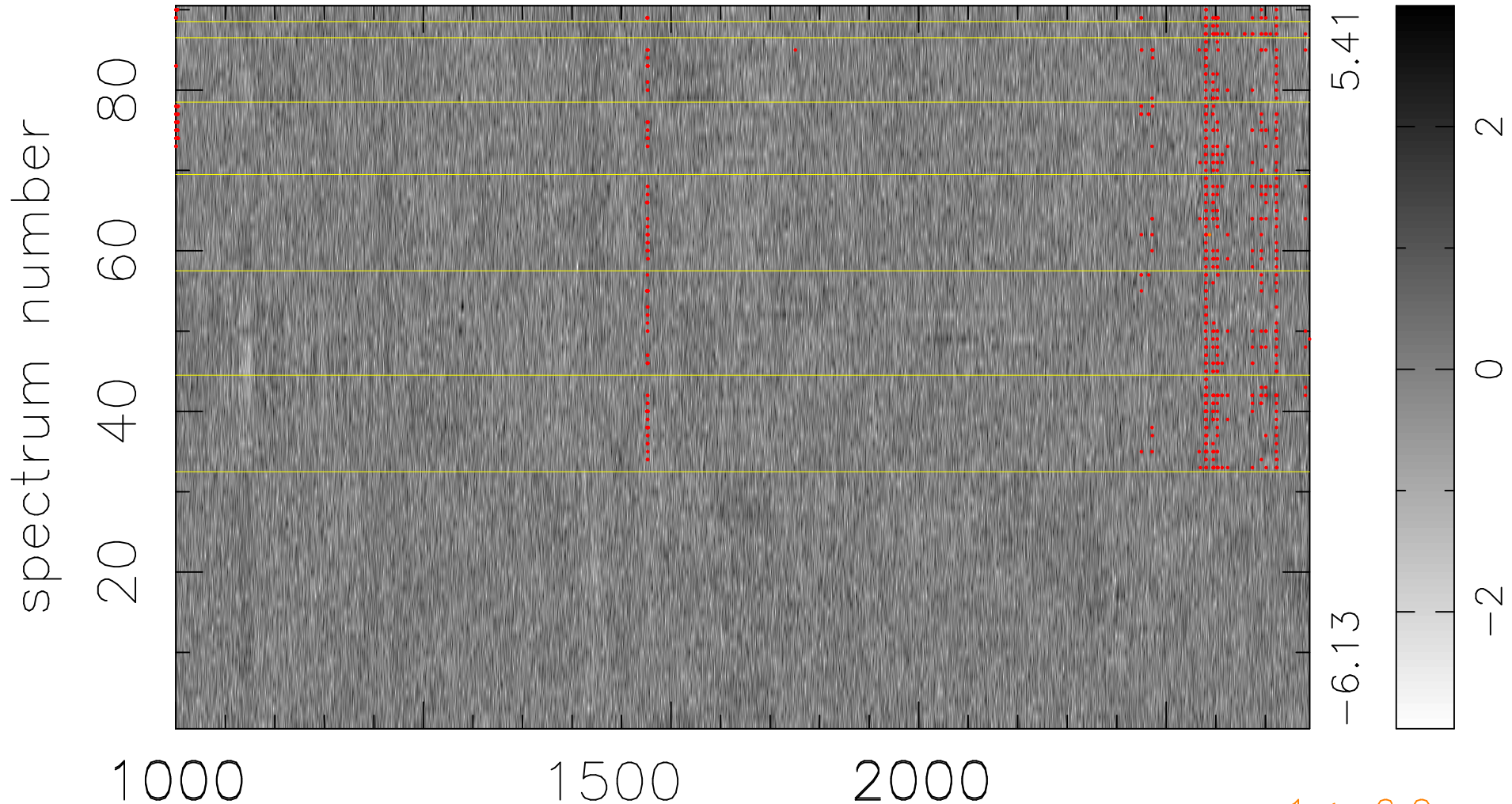


$$\chi(\lambda, t) = ( \text{Data} - \text{Model AC}_5\text{B}_7\text{F} ) / \sigma \chi$$

$$\chi^2 / (412200 - 5445) = 0.908 \Rightarrow 1.007$$

4580x90



bad:635=0.15%

$\lambda$  (Å)  $z = 2.59752$