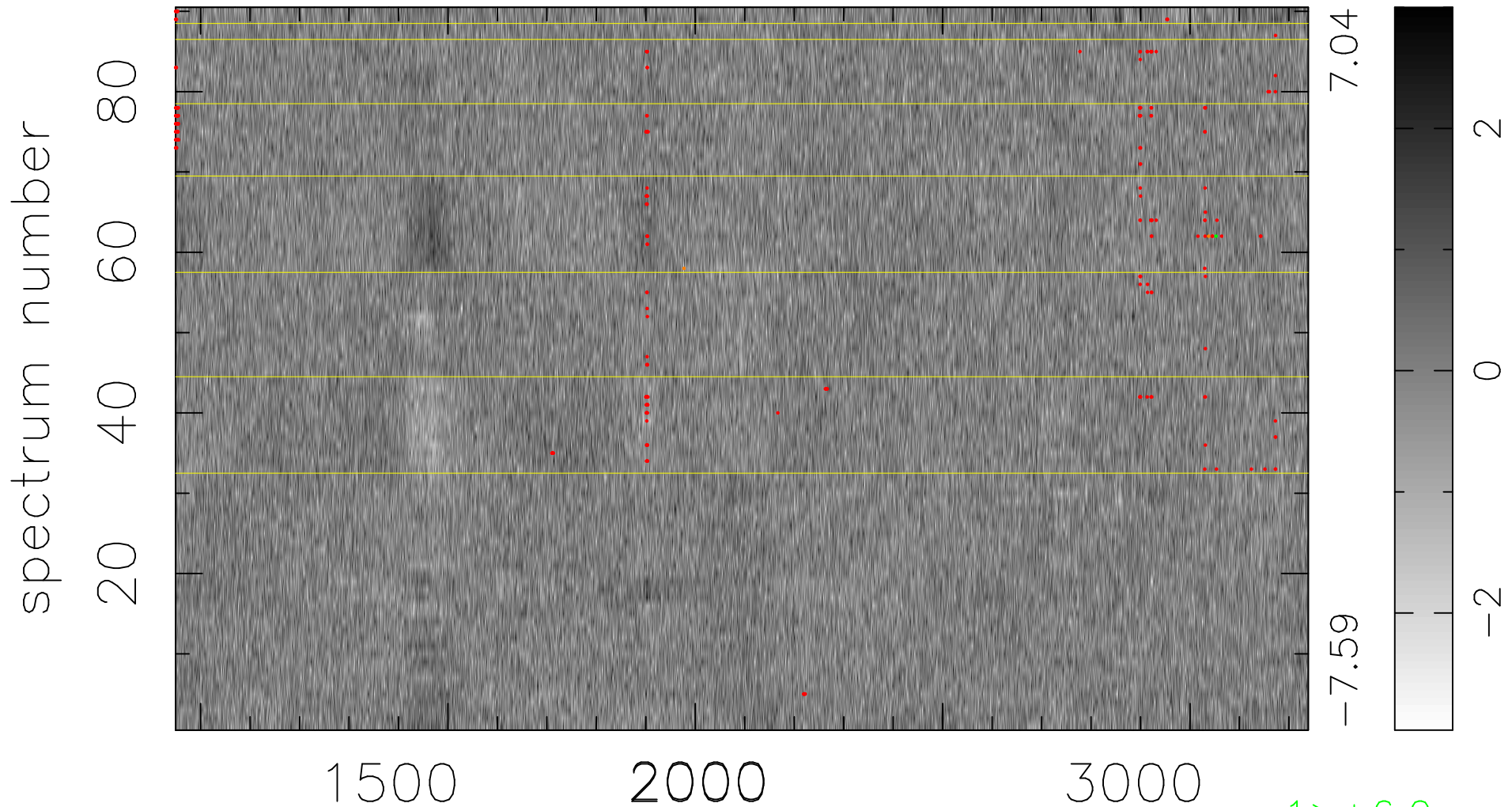


$$\chi(\lambda, t) = (\text{Data} - \text{Model AC}_5\text{F}) / \sigma \chi$$

$$\chi^2 / (412200 - 5235) = 0.945 \Rightarrow 1.007$$

4580x90



bad:272=0.066% λ (Å) $z = 1.92413$

1 > +6.0 σ

2 < -6.0 σ