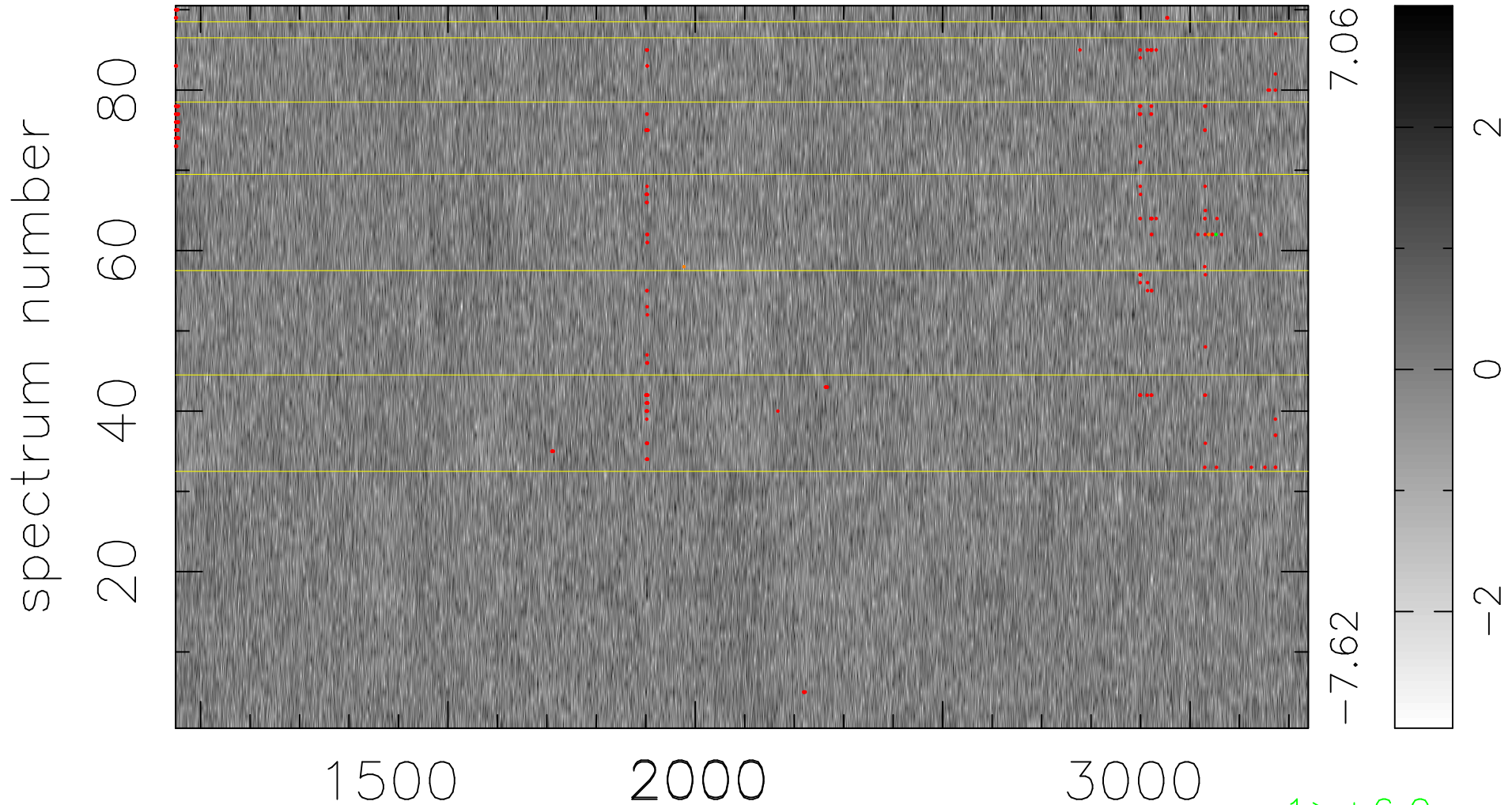


$$\chi(\lambda, t) = ( \text{Data} - \text{Model } \text{AC}_5\text{B}_6\text{F} ) / \sigma \chi$$

$$\chi^2 / (412200 - 5374) = 0.936 \Rightarrow 1.008$$

4580x90



bad:272=0.066%  $\lambda$  (Å)  $z = 1.92413$

1 > +6.0 $\sigma$

2 < -6.0 $\sigma$