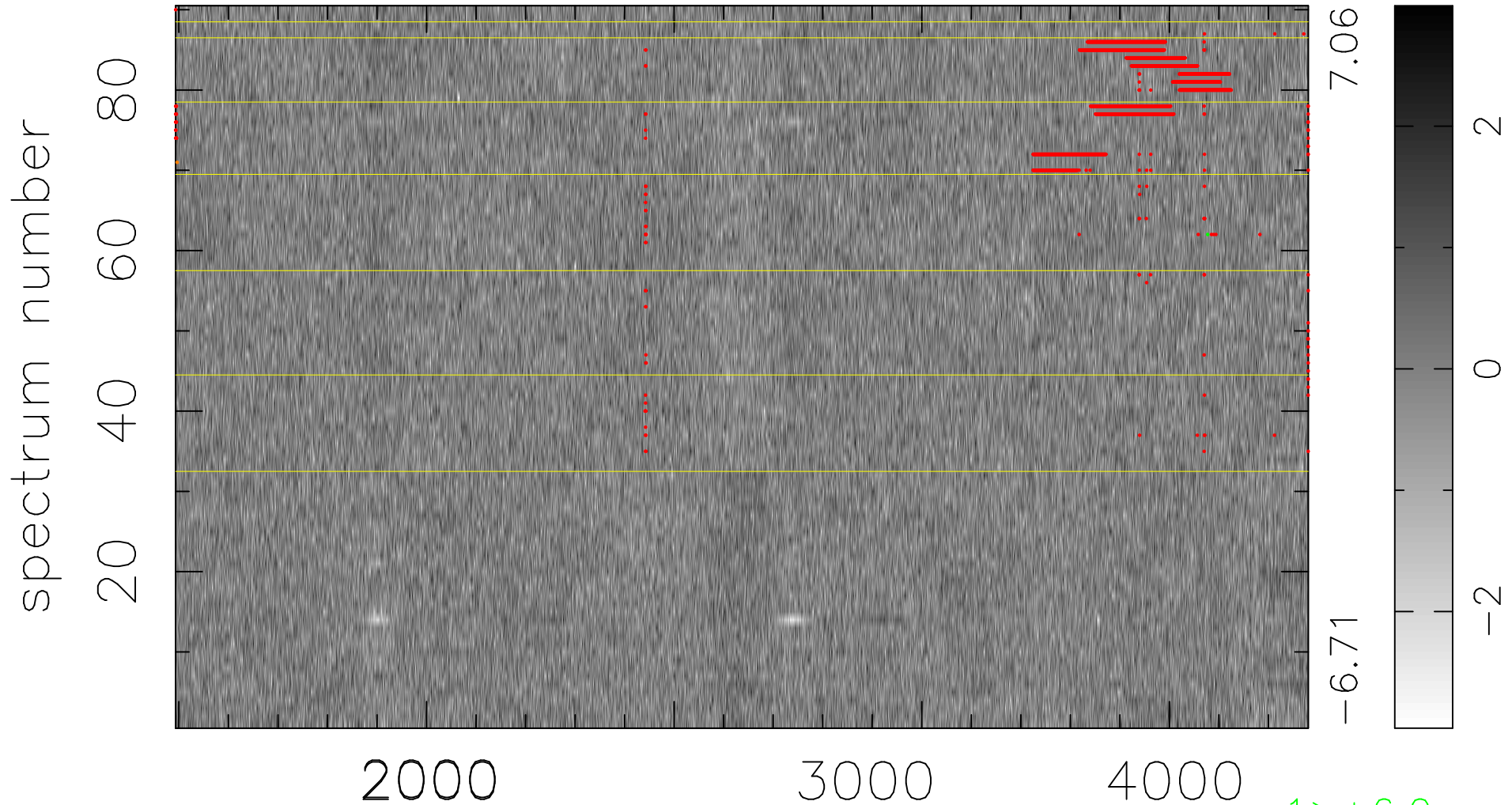


$$\chi(\lambda, t) = (\text{Data} - \text{Model AC}_5\text{F}) / \sigma \chi$$

$$\chi^2 / (411750 - 4949) = 0.912 \Rightarrow 1.008$$

4575x90



bad:3035=0.74% λ (Å) $z = 1.28047$

1 > +6.0σ

1 < -6.0σ