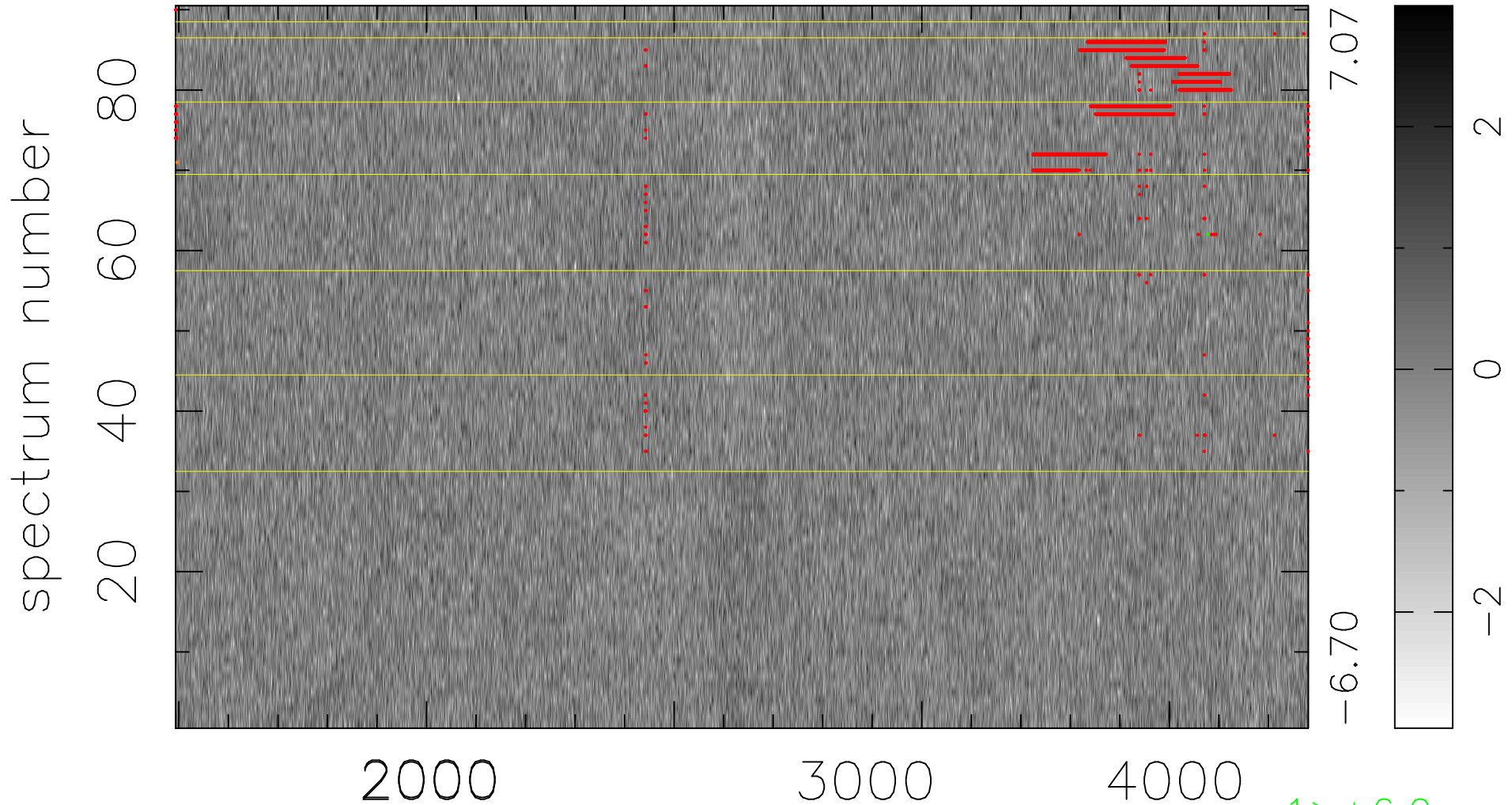


$$\chi(\lambda, t) = (\text{Data} - \text{Model } \text{AC}_5\text{B}_3\text{F}) / \sigma \chi$$

$$\chi^2 / (411750 - 5095) = 0.907 \Rightarrow 1.008$$

4575x90



7.07

-6.70

2

0

-2

1 > +6.0σ

1 < -6.0σ

bad:3035=0.74% λ (Å) z = 1.28047