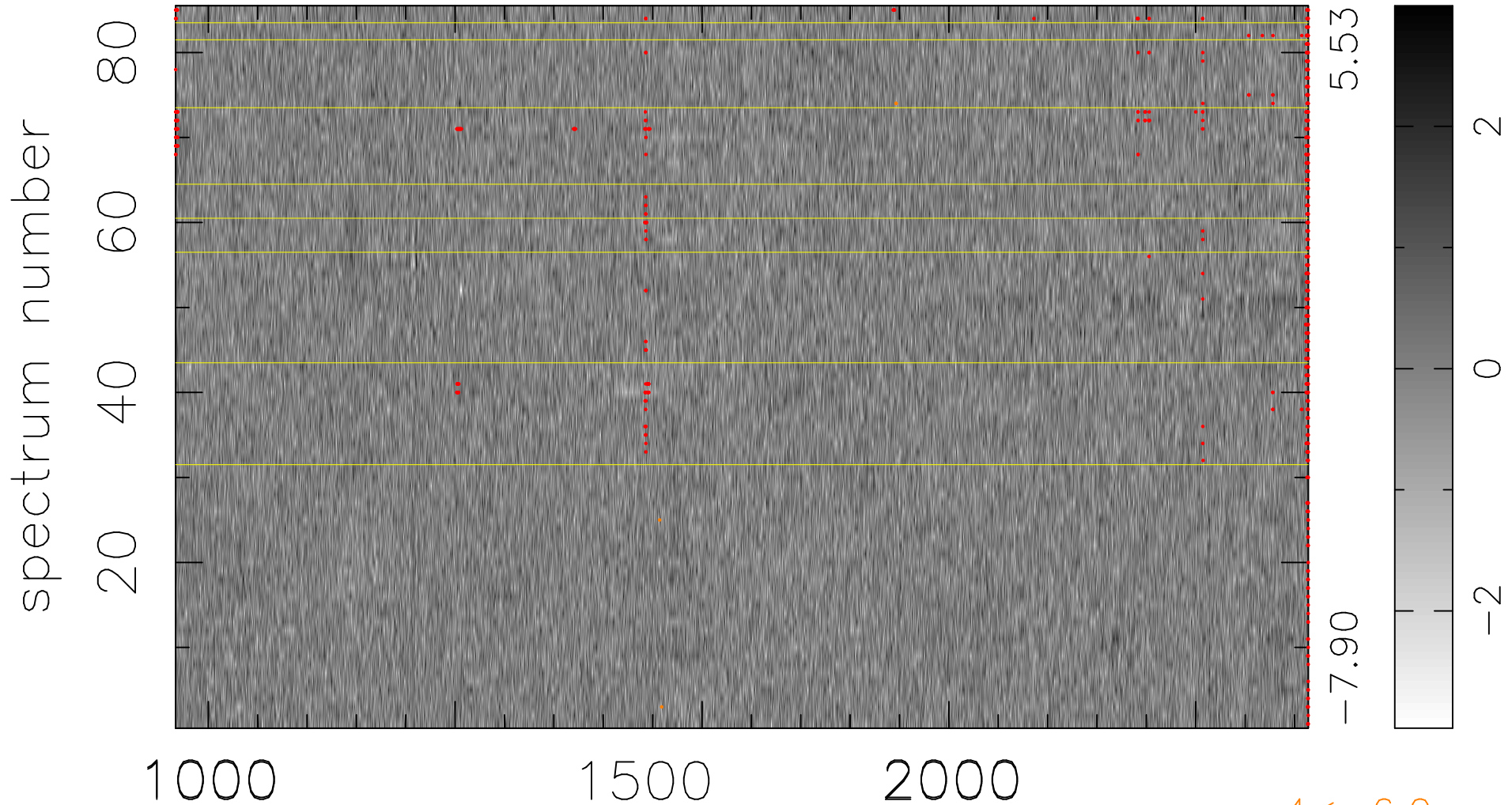


$$\chi(\lambda, t) = (\text{Data} - \text{Model } \text{AC}_5\text{B}_6\text{F}) / \sigma \chi$$

$$\chi^2 / (390065 - 5375) = 0.912 \Rightarrow 1.008$$

4589x85



bad:729=0.19%

λ (Å) $z = 2.70959$