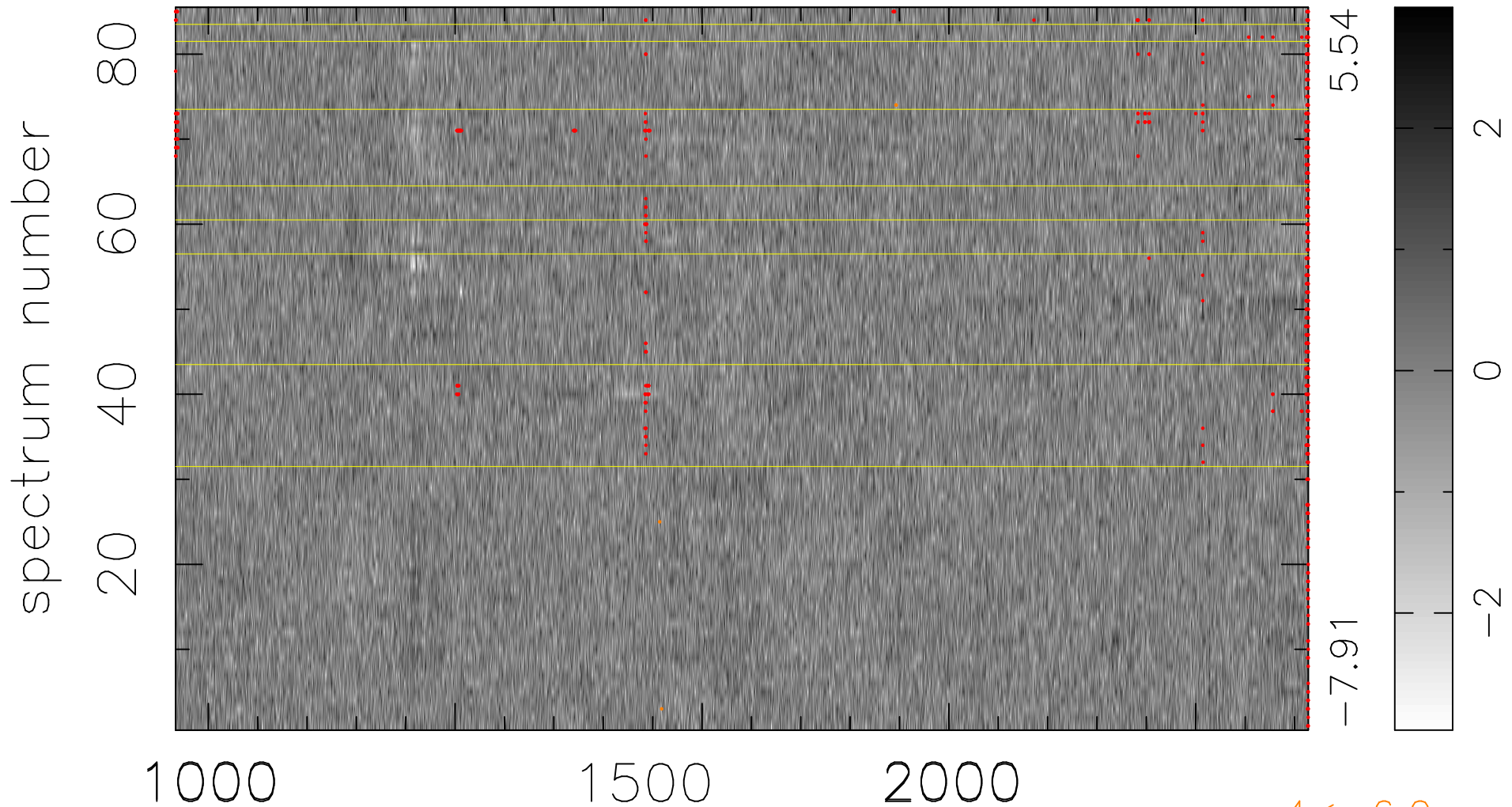


$$\chi(\lambda, t) = ( \text{Data} - \text{Model AC}_5\text{F} ) / \sigma \chi$$

$$\chi^2 / (390065 - 5221) = 0.917 \Rightarrow 1.008$$

4589 × 85



bad:729=0.19%

$\lambda$  (Å)  $z = 2.70959$

$4 < -6.0\sigma$