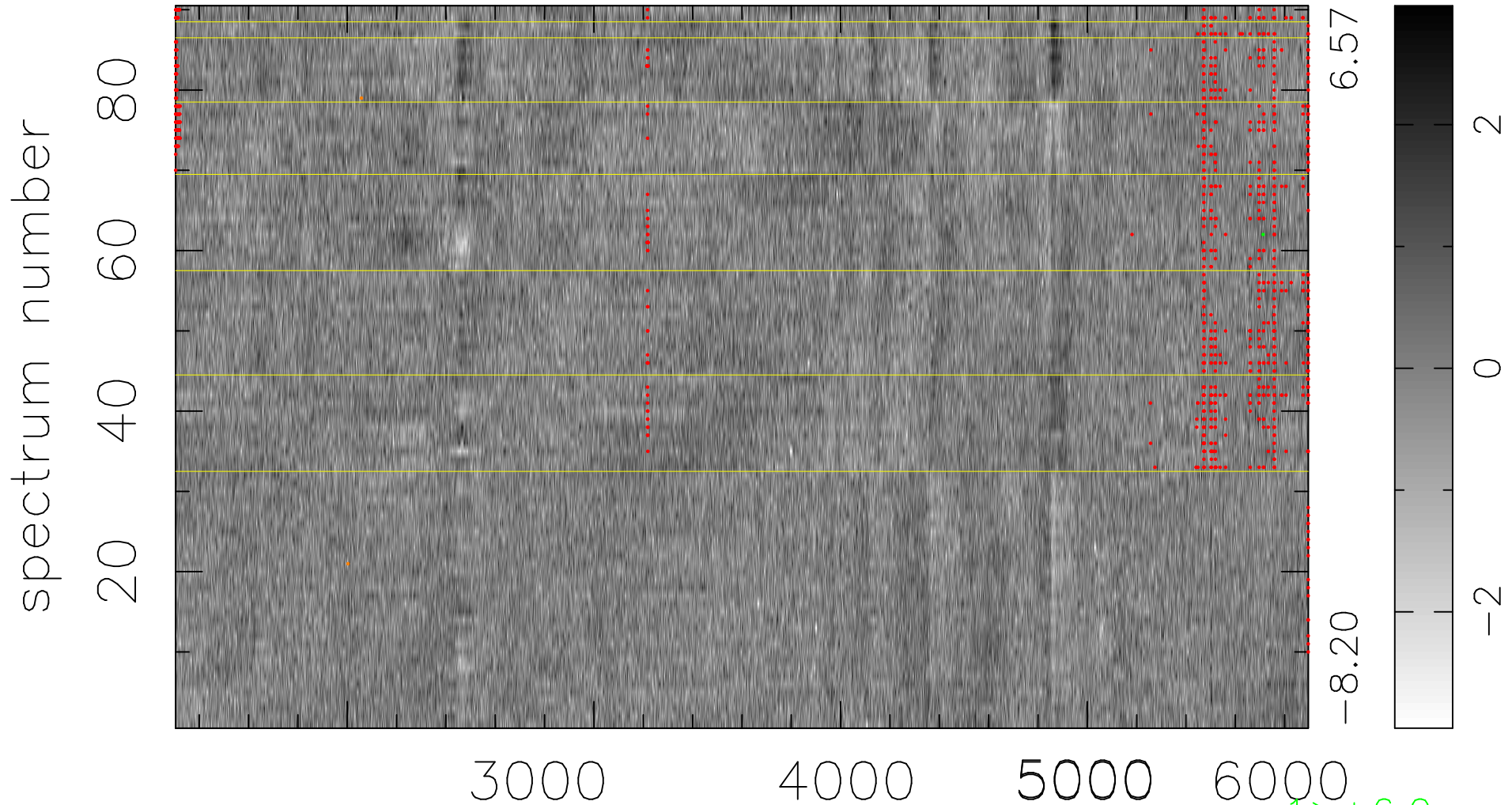


$$\chi(\lambda, t) = (\text{Data} - \text{Model AC}_5\text{F}) / \sigma \chi$$

$$\chi^2 / (413280 - 4971) = 0.867 \Rightarrow 1.002$$

4592x90



bad:869=0.21%

λ (Å) $z = 0.67786$

1 > +6.0σ

2 < -6.0σ