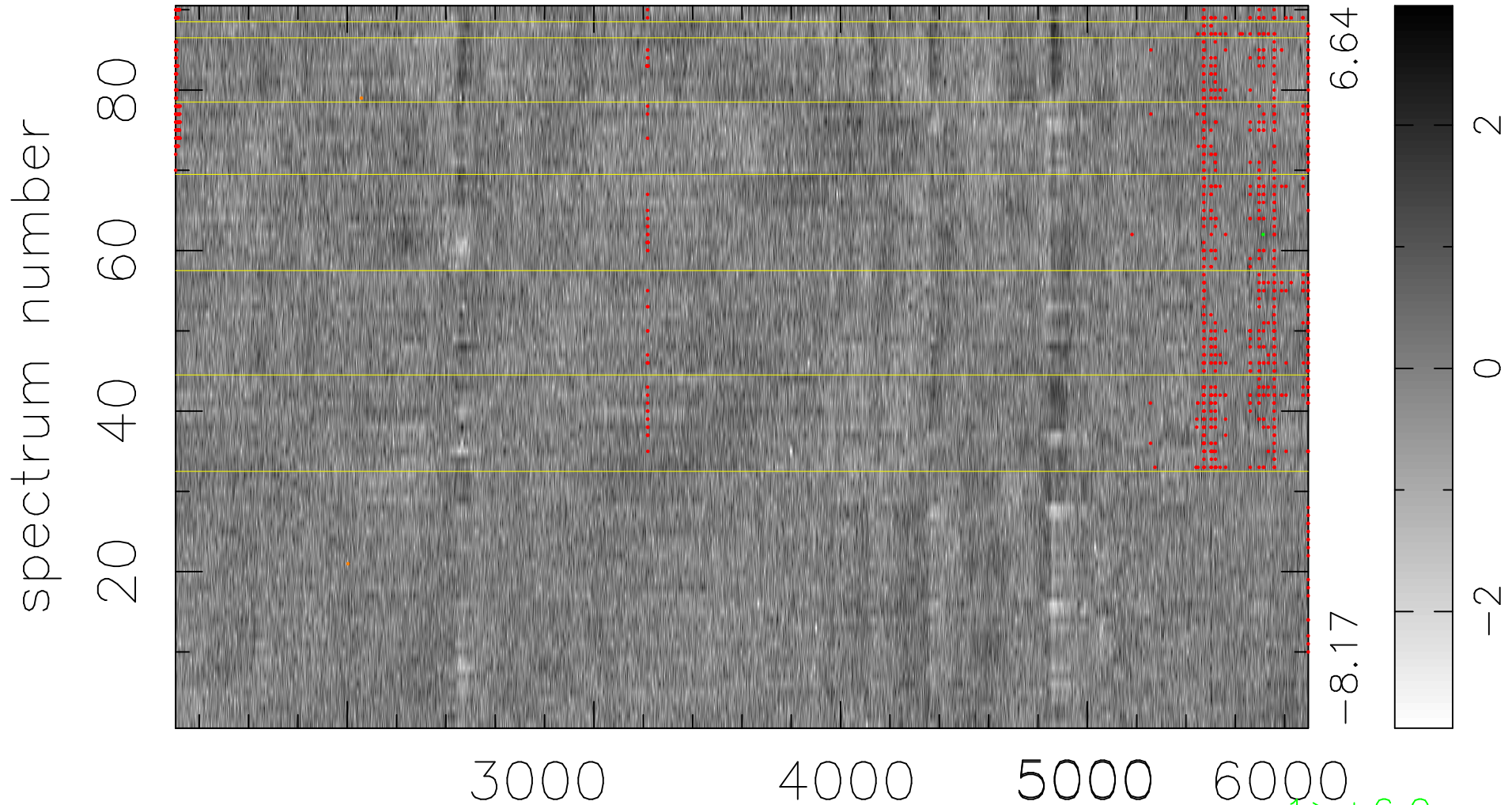


$$\chi(\lambda,t) = (\text{Data} - \text{Model } AC_5) / \sigma \chi$$

$$\chi^2 / (413280 - 4881) = 0.871 \Rightarrow 1.003$$

4592x90



bad:869=0.21%

λ (Å) $z = 0.67786$

1 > +6.0 σ

2 < -6.0 σ