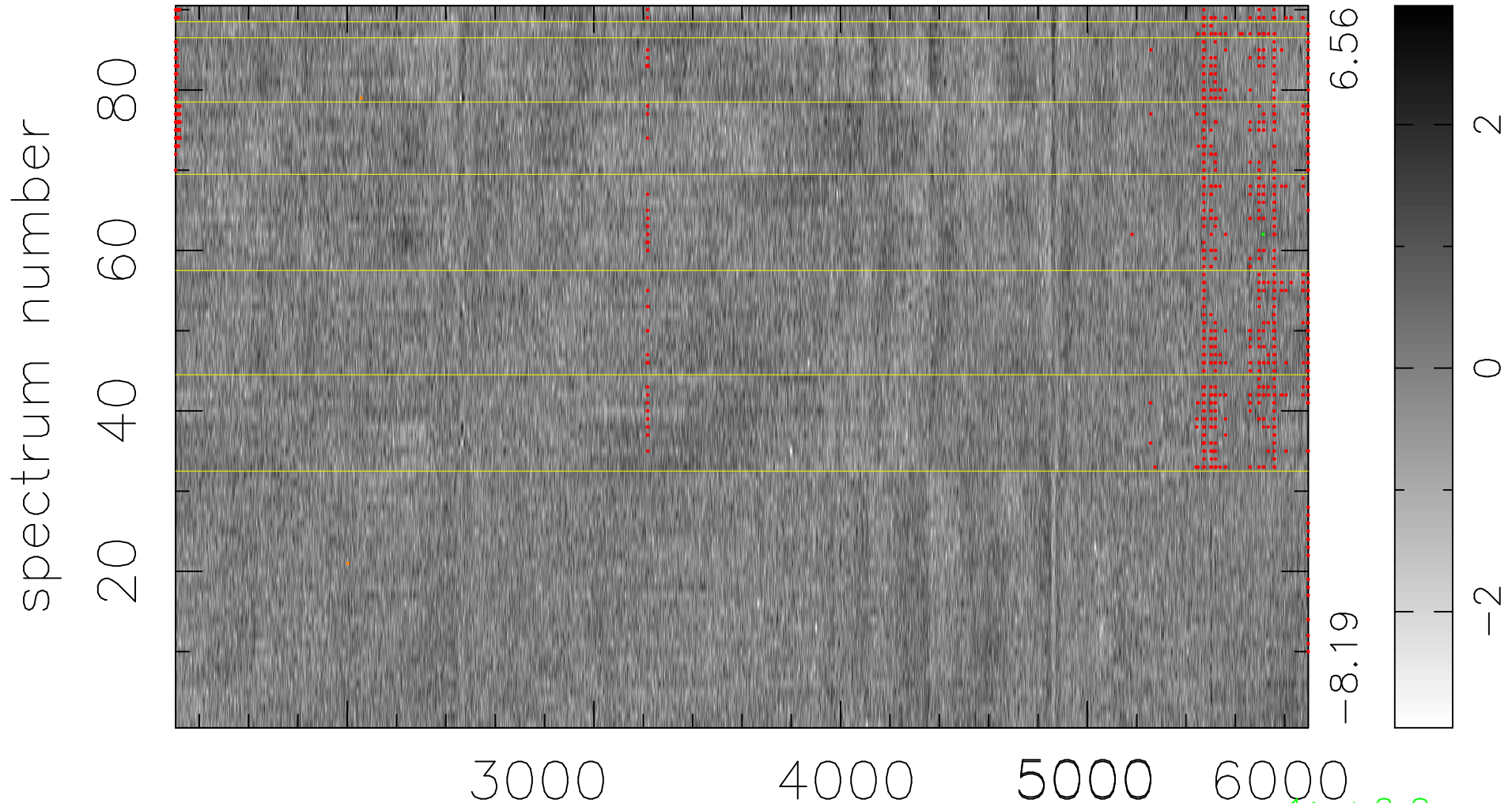


$$\chi(\lambda, t) = (\text{Data} - \text{Model } \text{AC}_5\text{B}_3\text{F}) / \sigma \chi$$

$$\chi^2 / (413280 - 5112) = 0.854 \Rightarrow 1.001$$

4592x90



6.56

-8.19

2

0

-2

1 > +6.0σ

2 < -6.0σ

bad:869=0.21%

λ (Å) z = 0.67786