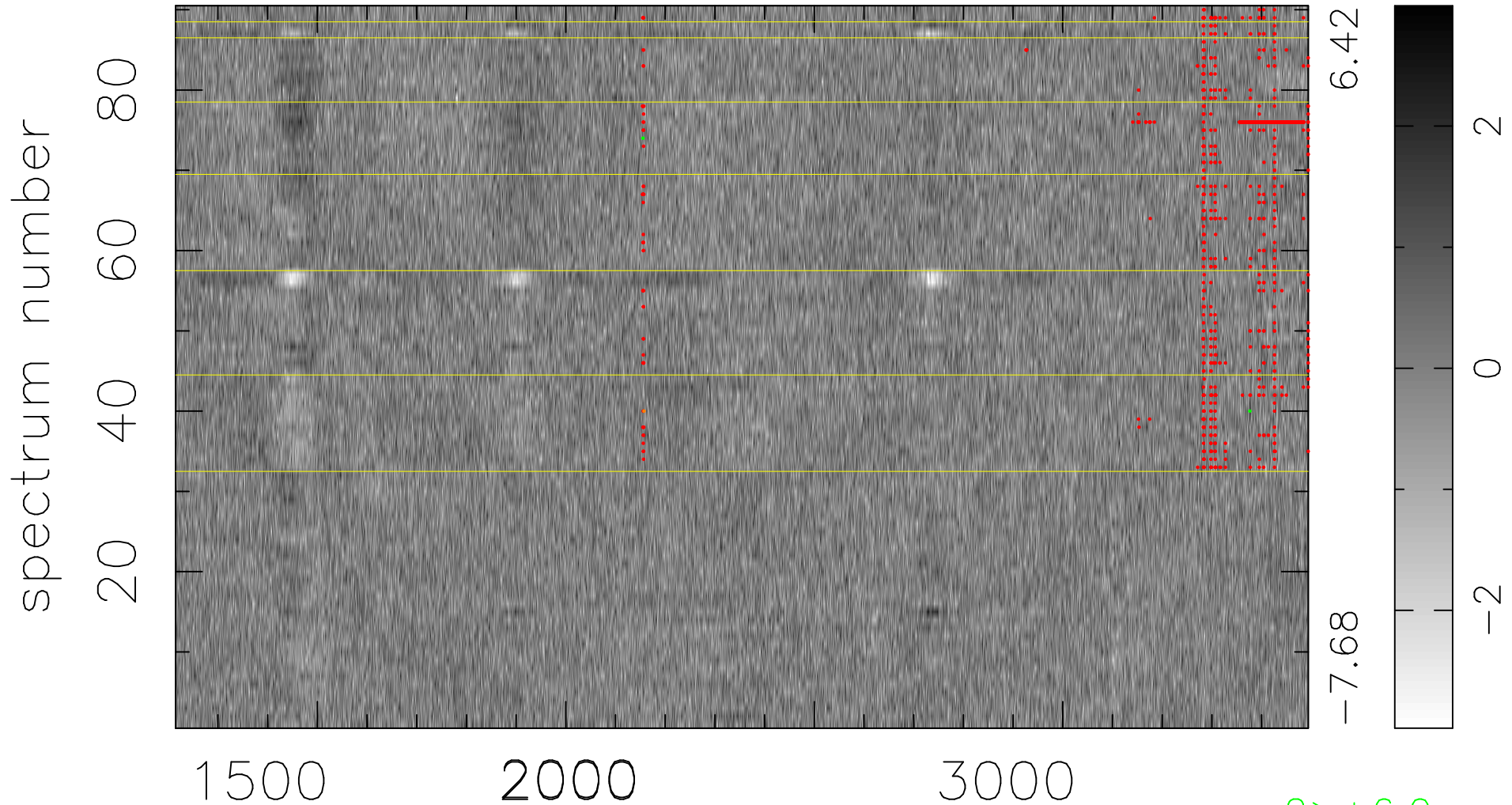


$$\chi(\lambda, t) = ( \text{Data} - \text{Model AC}_5\text{F} ) / \sigma \chi$$

$$\chi^2 / (410310 - 5130) = 0.914 \Rightarrow 1.008$$

4559x90



bad:829=0.20%

$\lambda$  (Å)  $z = 1.60214$

2 > +6.0 $\sigma$

1 < -6.0 $\sigma$