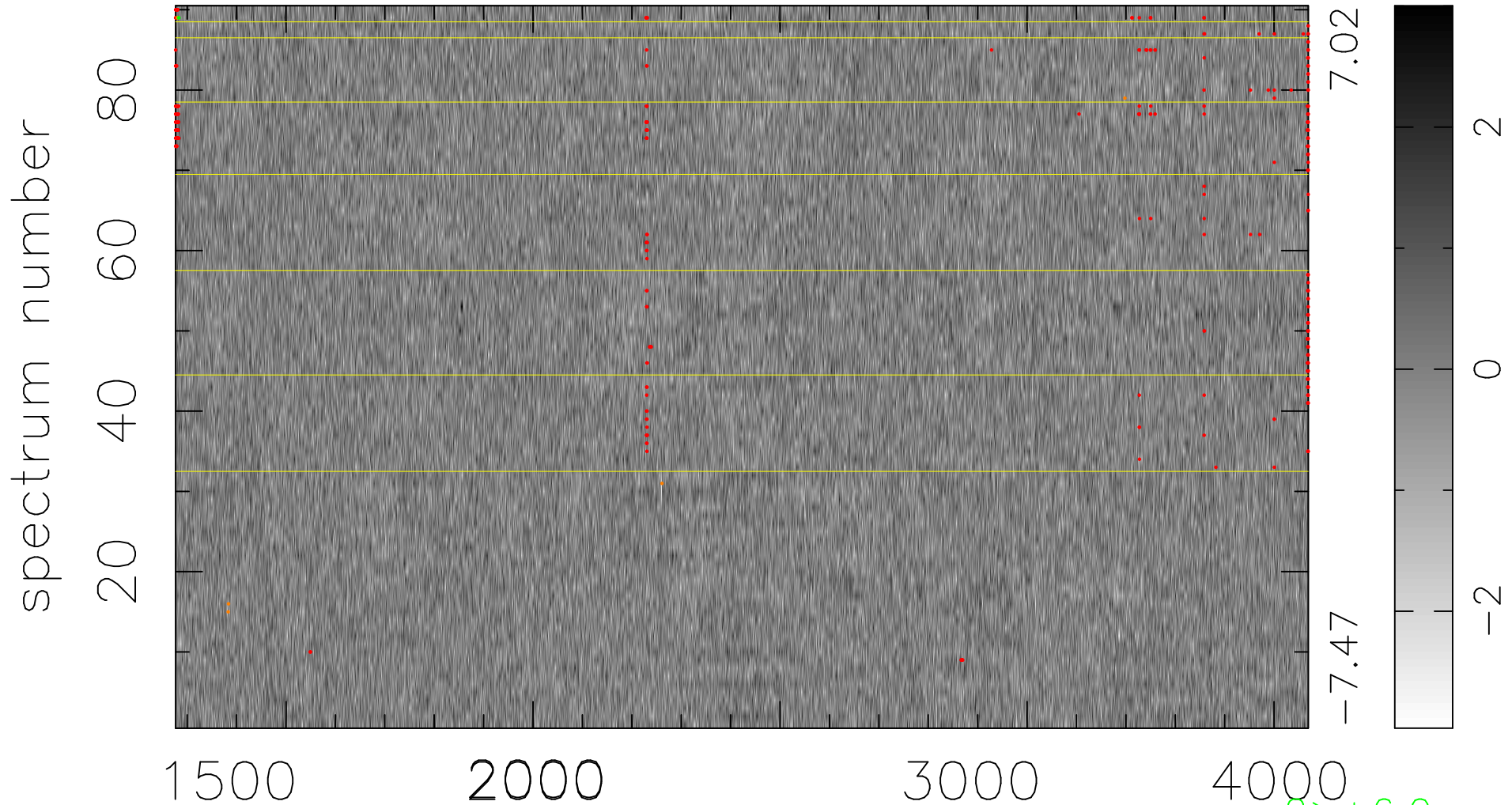


$$\chi(\lambda, t) = (\text{Data} - \text{Model } \text{AC}_5\text{B}_4\text{F}) / \sigma \chi$$

$$\chi^2 / (412740 - 5219) = 0.888 \Rightarrow 1.008$$

4586x90



bad:328=0.079% λ (Å) $z = 1.51467$

$2 > +6.0\sigma$

$6 < -6.0\sigma$