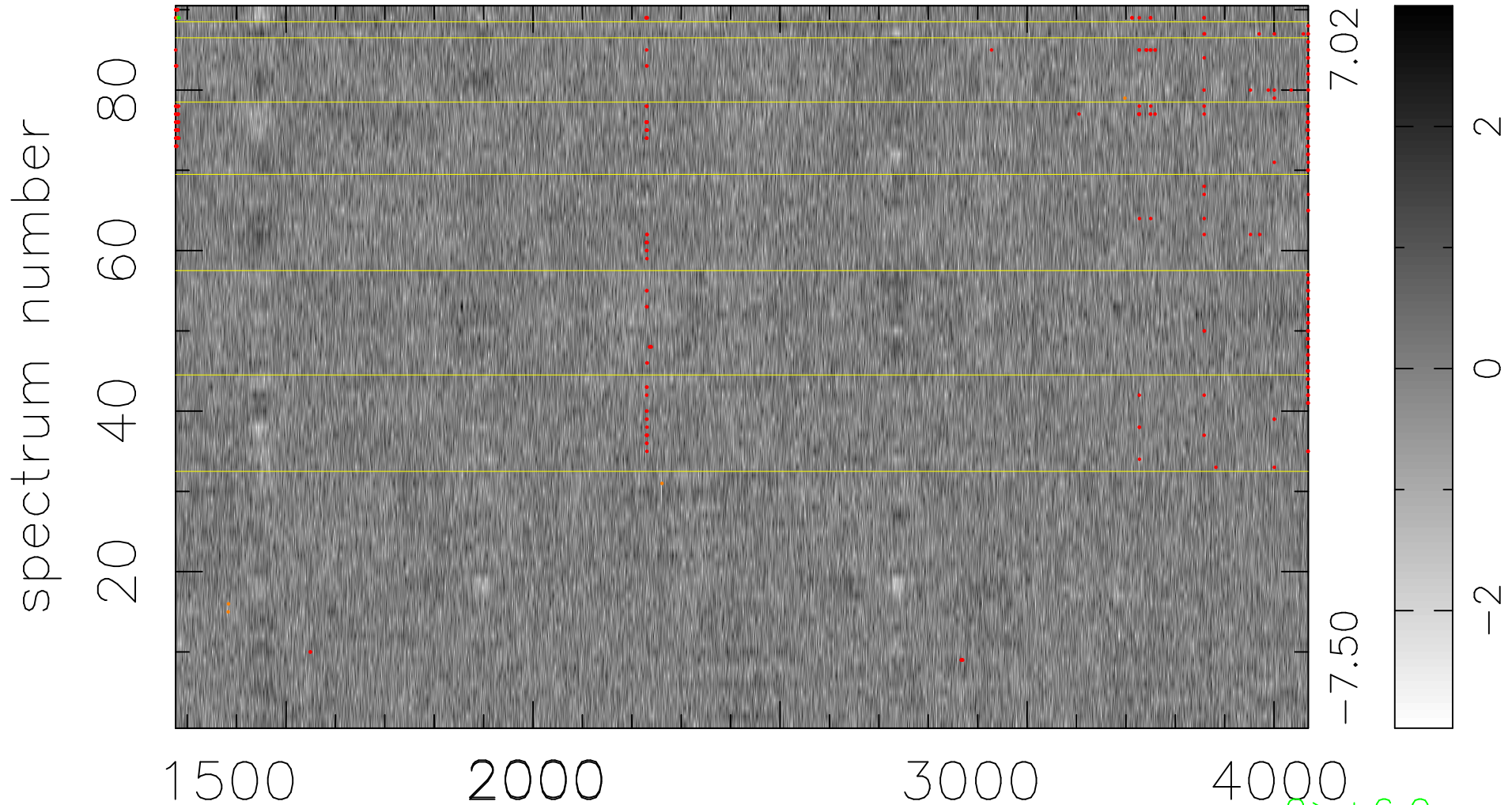


$$\chi(\lambda, t) = (\text{Data} - \text{Model AC}_5\text{F}) / \sigma \chi$$

$$\chi^2 / (412740 - 5066) = 0.897 \Rightarrow 1.007$$

4586x90



bad:328=0.079% λ (Å) $z = 1.51467$

2 > +6.0σ

6 < -6.0σ