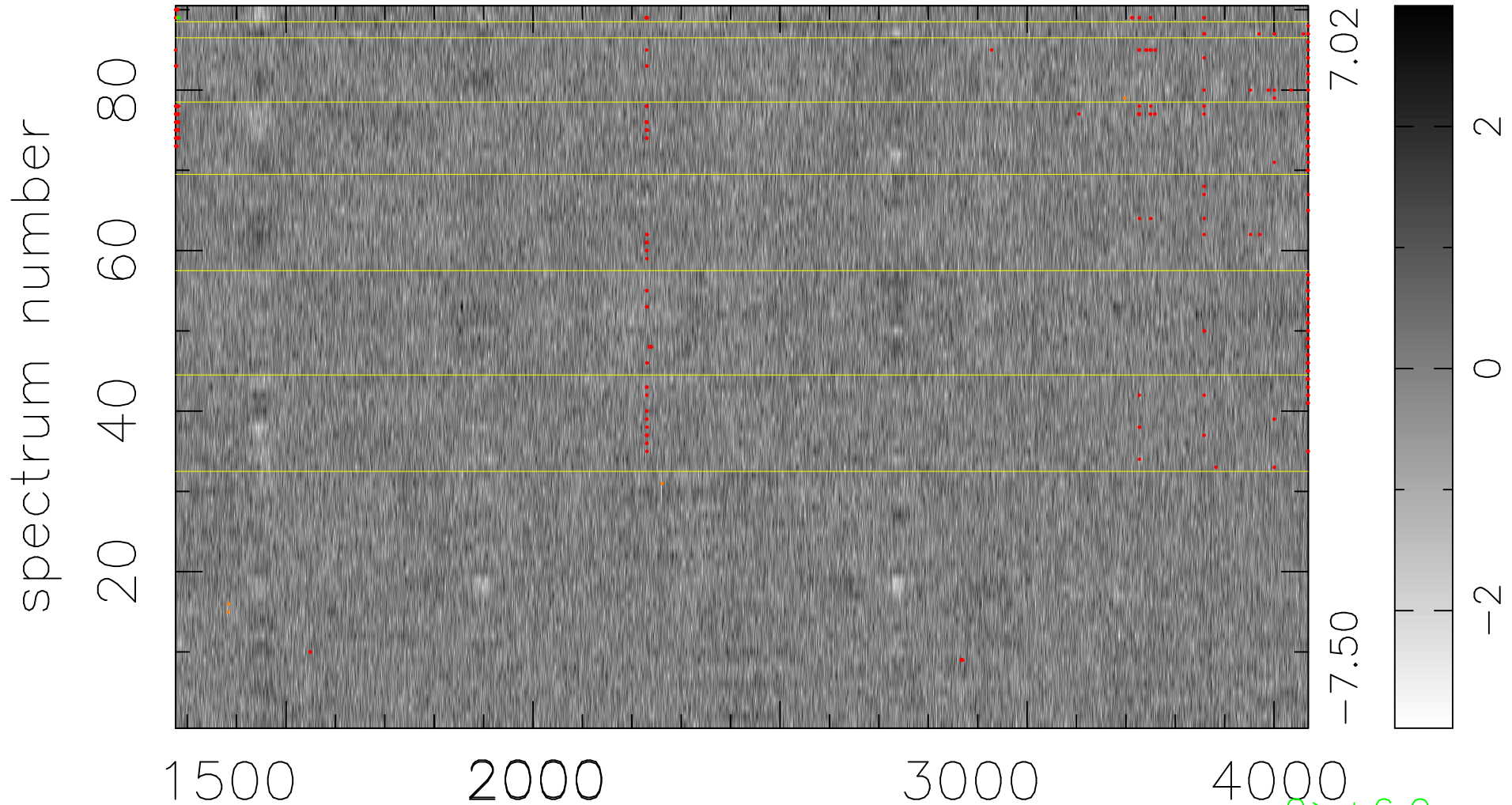


$$\chi(\lambda, t) = ( \text{Data} - \text{Model } AC_5 ) / \sigma \chi$$

$$\chi^2 / (412740 - 4976) = 0.898 \Rightarrow 1.007$$

4586x90



bad:328=0.079%  $\lambda$  (Å)  $z = 1.51467$

2 > +6.0σ

6 < -6.0σ