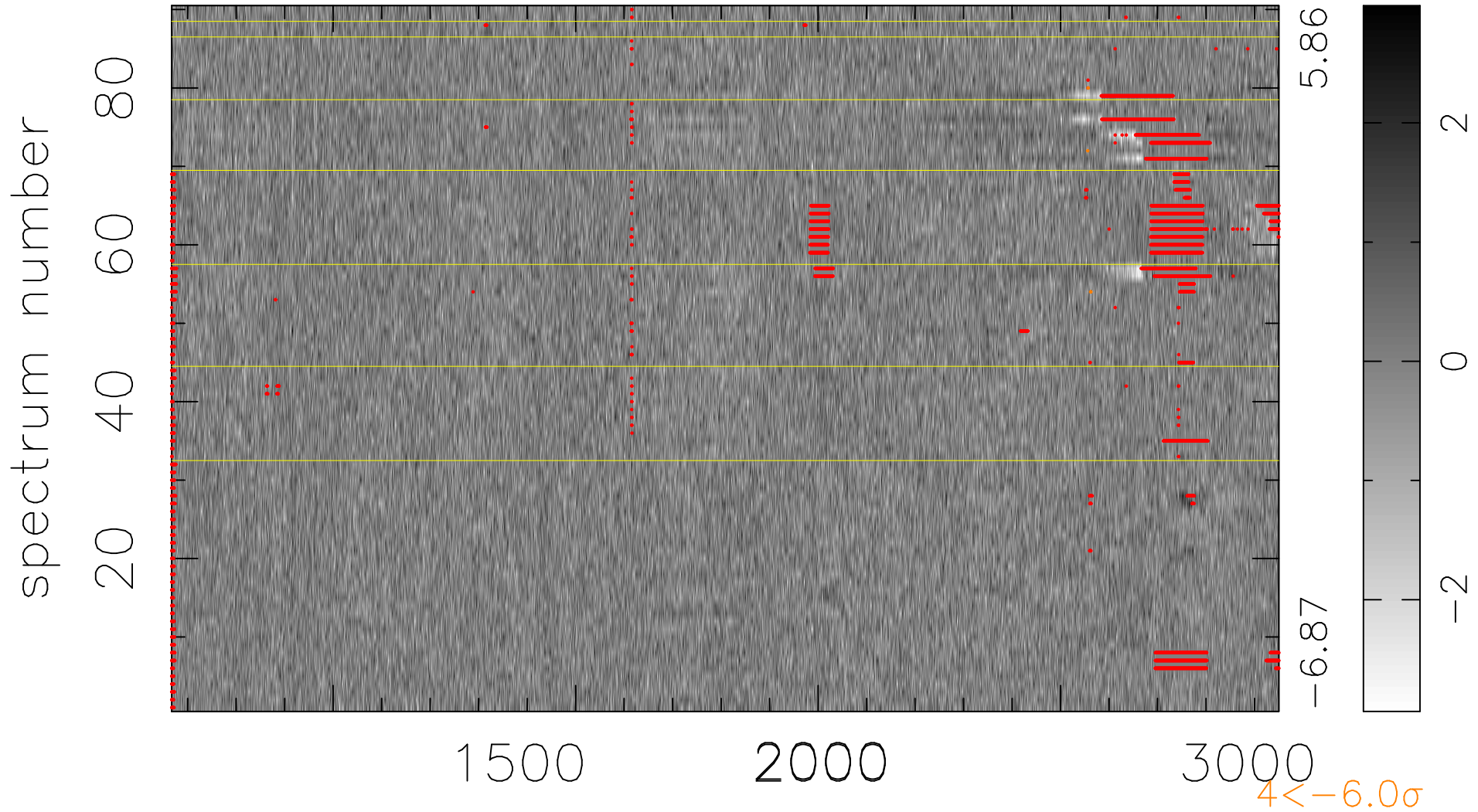


$$\chi(\lambda, t) = (\text{Data} - \text{Model } \text{AC}_5\text{B}_7\text{F}) / \sigma \chi$$

$$\chi^2 / (411030 - 5455) = 0.909 \Rightarrow 1.008$$

4567 × 90



bad:6564=1.6%

λ (Å) $z = 2.33728$