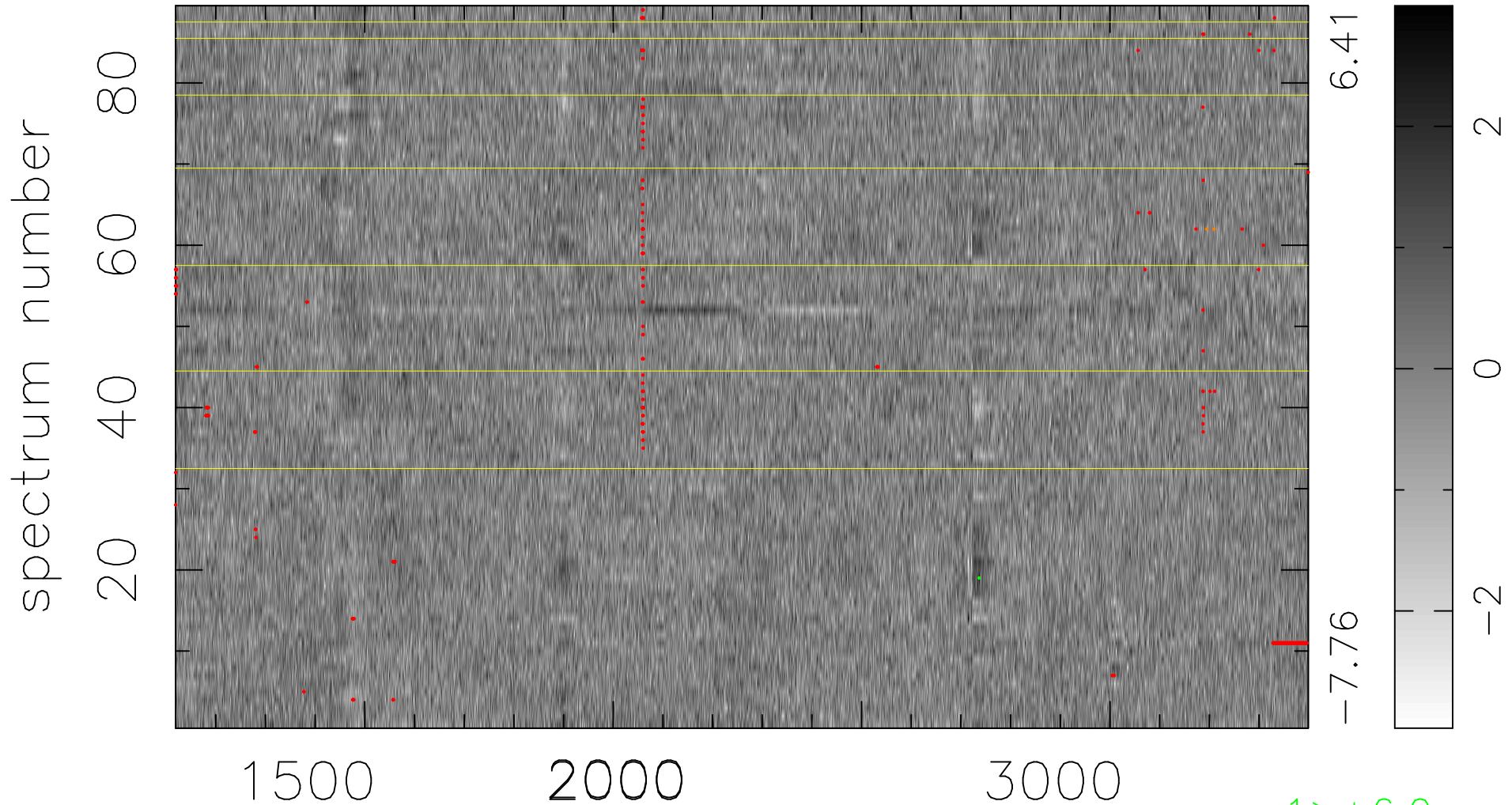


$$\chi(\lambda, t) = ( \text{Data} - \text{Model AC}_5\text{F} ) / \sigma \chi$$

$$\chi^2 / (405929 - 5132) = 0.938 \Rightarrow 1.007$$

4561 × 89



bad:346=0.085%  $\lambda$  (Å)  $z = 1.72000$

1 > +6.0 $\sigma$

2 < -6.0 $\sigma$