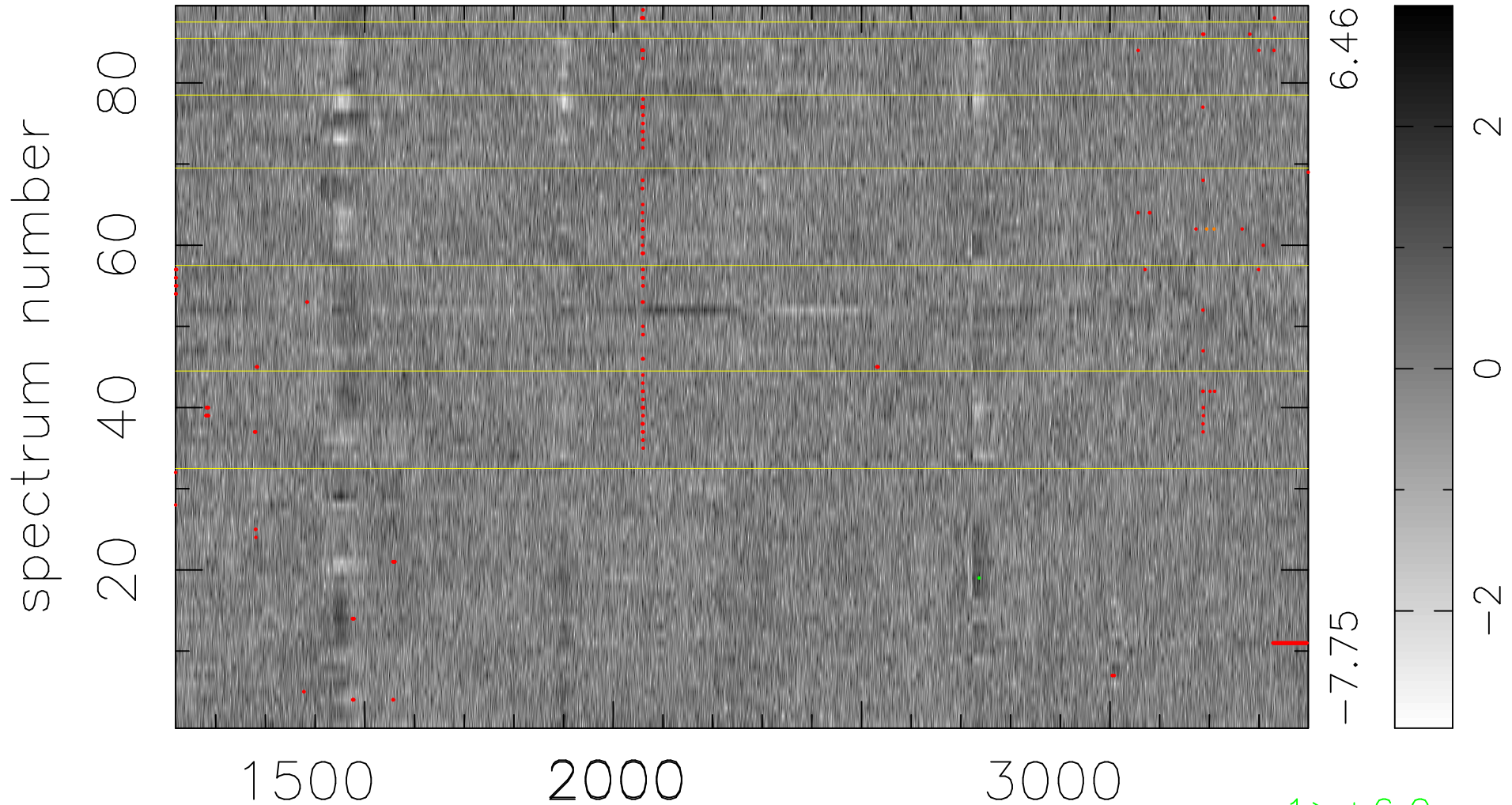


$$\chi(\lambda,t) = (\text{Data} - \text{Model } AC_5) / \sigma \chi$$

$$\chi^2 / (405929 - 5043) = 0.952 \Rightarrow 1.007$$

4561 × 89



bad:346=0.085% λ (Å) $z = 1.72000$

1 > +6.0σ

2 < -6.0σ