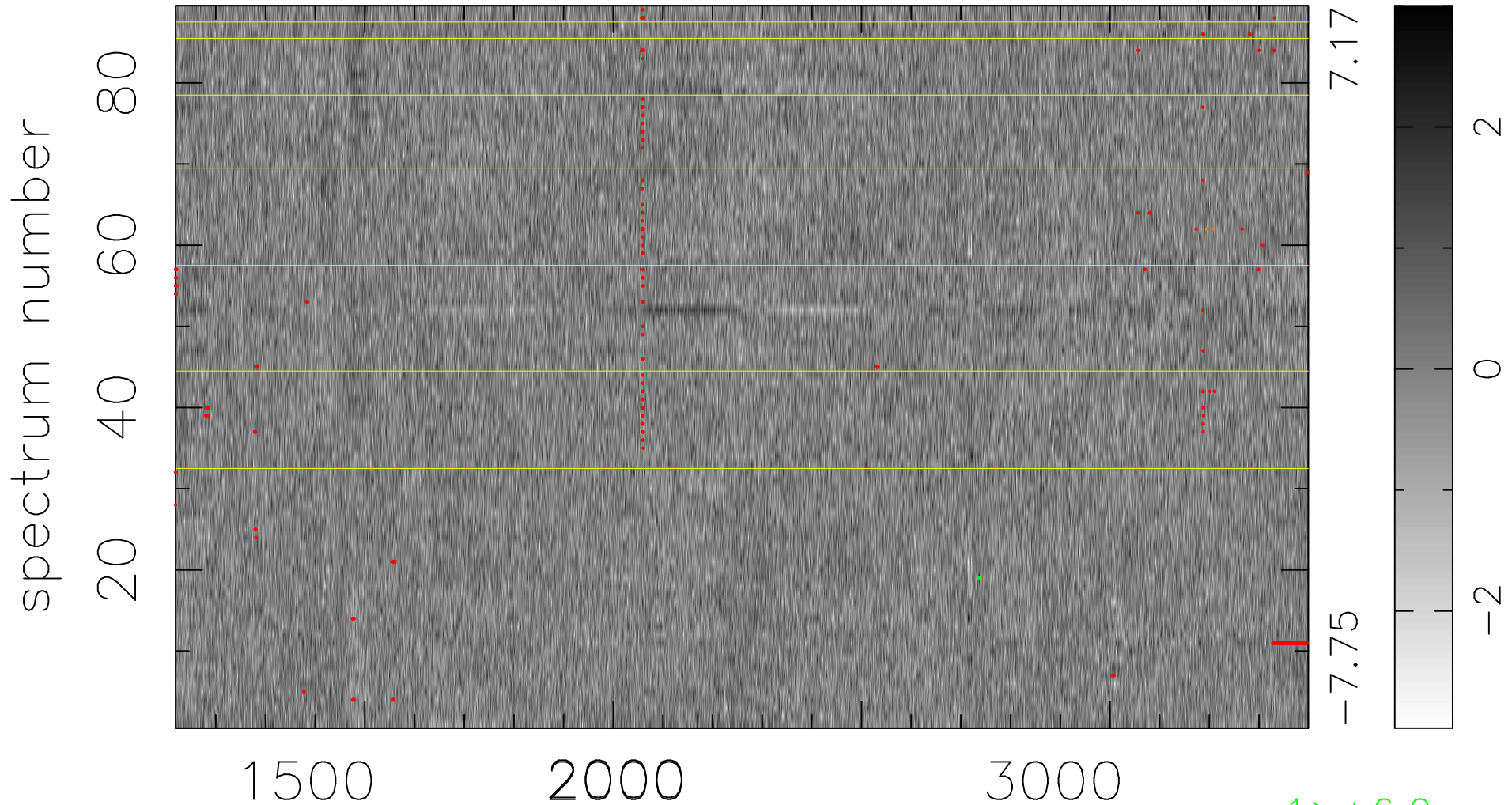


$$\chi(\lambda, t) = (\text{Data} - \text{Model } \text{AC}_5\text{B}_5\text{F}) / \sigma \chi$$

$$\chi^2 / (405929 - 5300) = 0.927 \Rightarrow 1.008$$

4561 × 89



bad:346=0.085% λ (Å) $z = 1.72000$

1 > +6.0 σ

2 < -6.0 σ