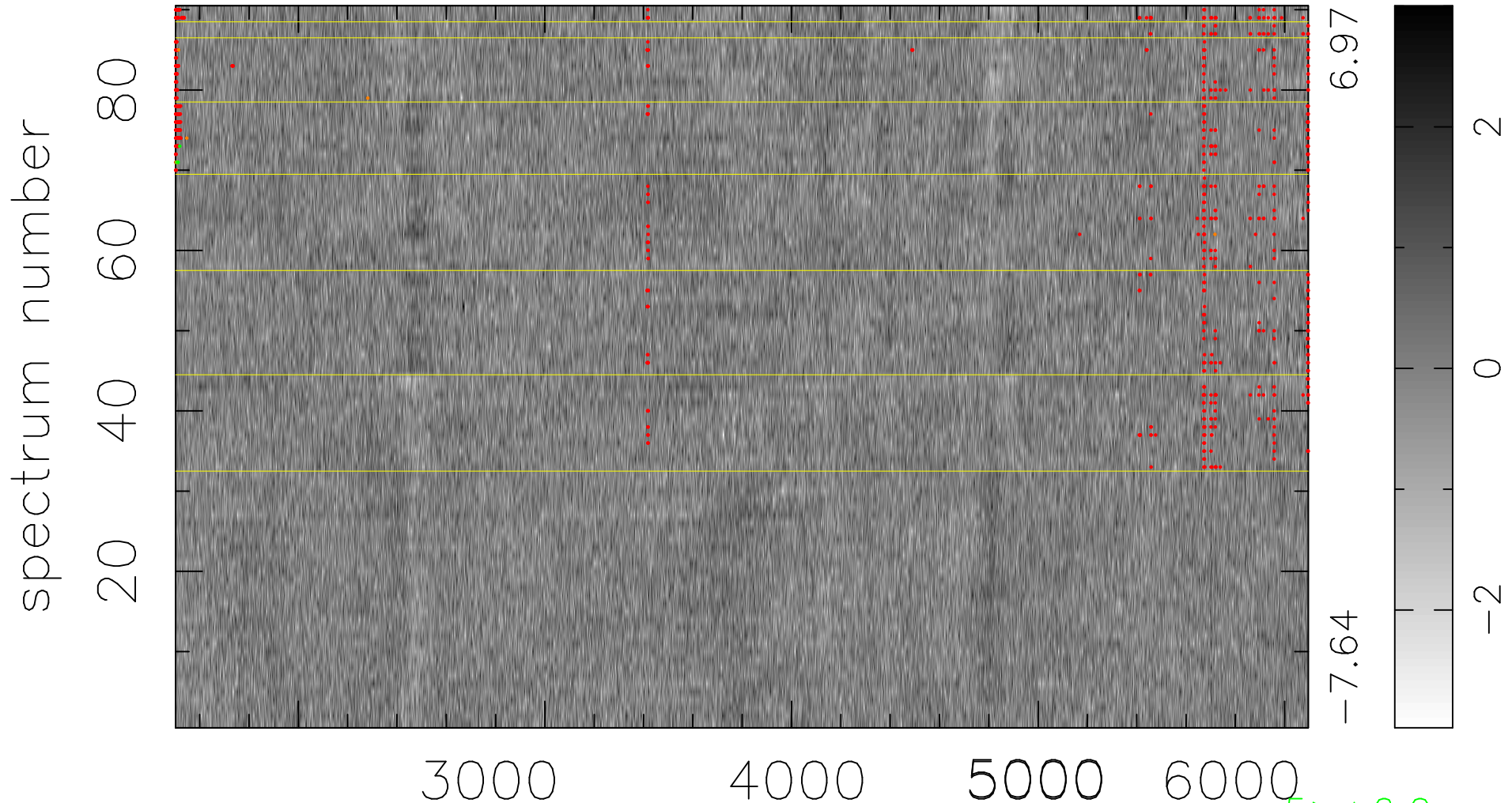


$$\chi(\lambda, t) = ( \text{Data} - \text{Model AC}_5\text{F} ) / \sigma \chi$$

$$\chi^2 / (413460 - 4970) = 0.931 \Rightarrow 1.009$$

4594x90



bad:728=0.18%

$\lambda$  (Å)  $z = 0.60234$

5 > +6.0σ

7 < -6.0σ