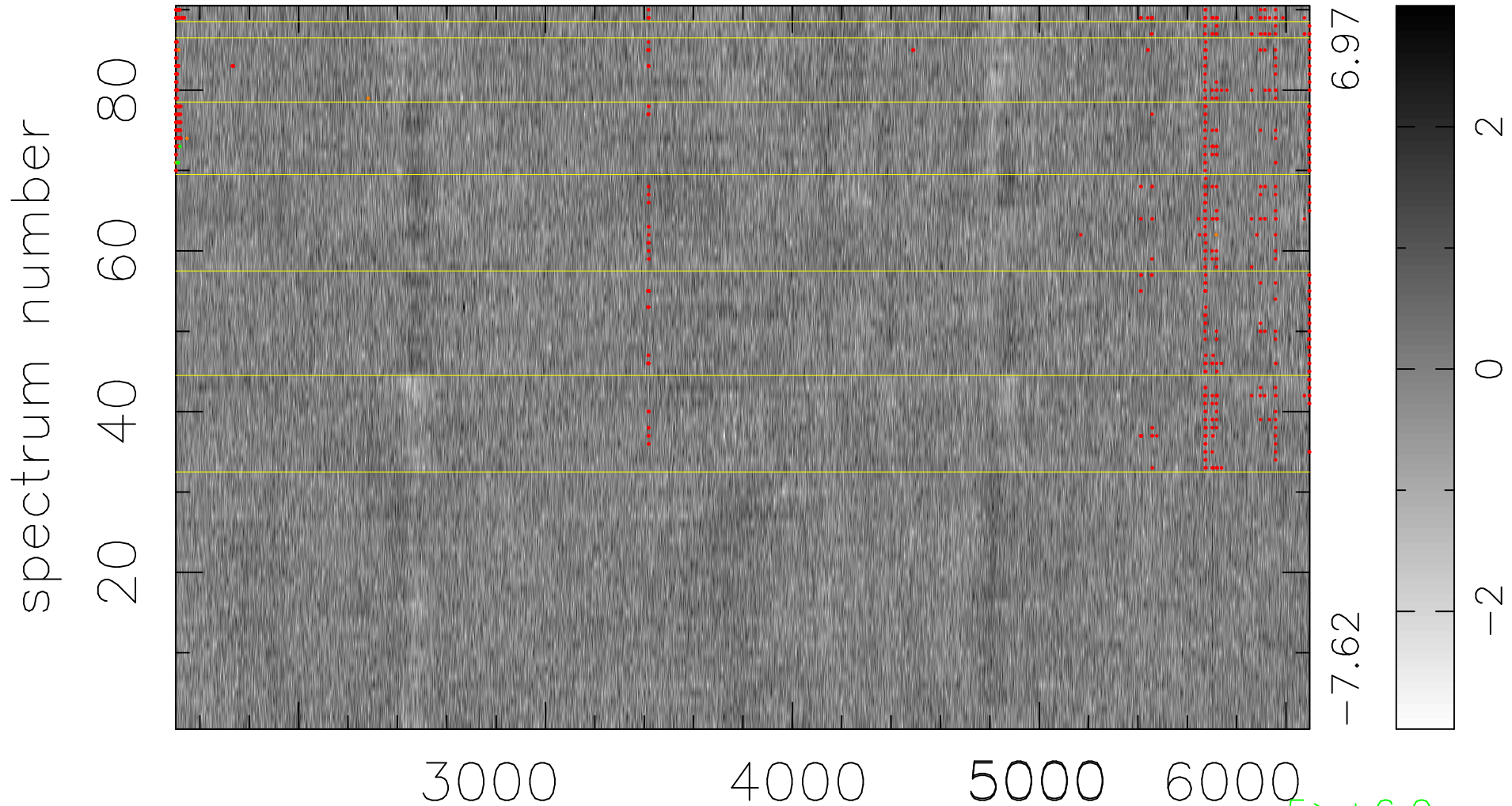


$$\chi(\lambda,t) = (\text{Data} - \text{Model } AC_5) / \sigma \chi$$

$$\chi^2 / (413460 - 4880) = 0.934 \Rightarrow 1.008$$

4594x90



bad:728=0.18%

λ (Å) $z = 0.60234$

5 > +6.0σ

7 < -6.0σ