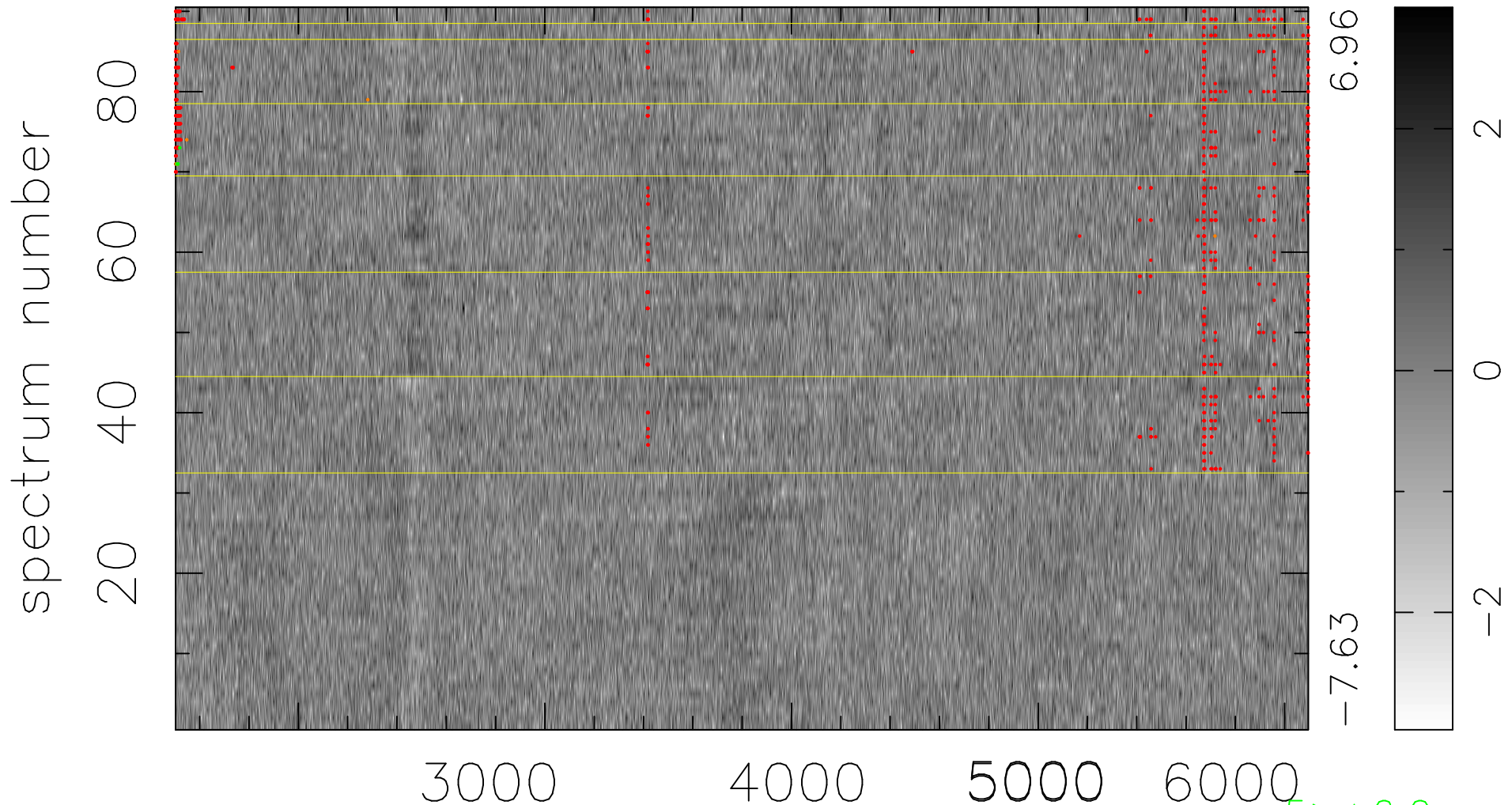


$$\chi(\lambda, t) = (\text{Data} - \text{Model } \text{AC}_5\text{B}_3\text{F}) / \sigma \chi$$

$$\chi^2 / (413460 - 5116) = 0.928 \Rightarrow 1.009$$

4594x90



bad:728=0.18%

λ (Å) $z = 0.60234$

5 > +6.0σ

7 < -6.0σ