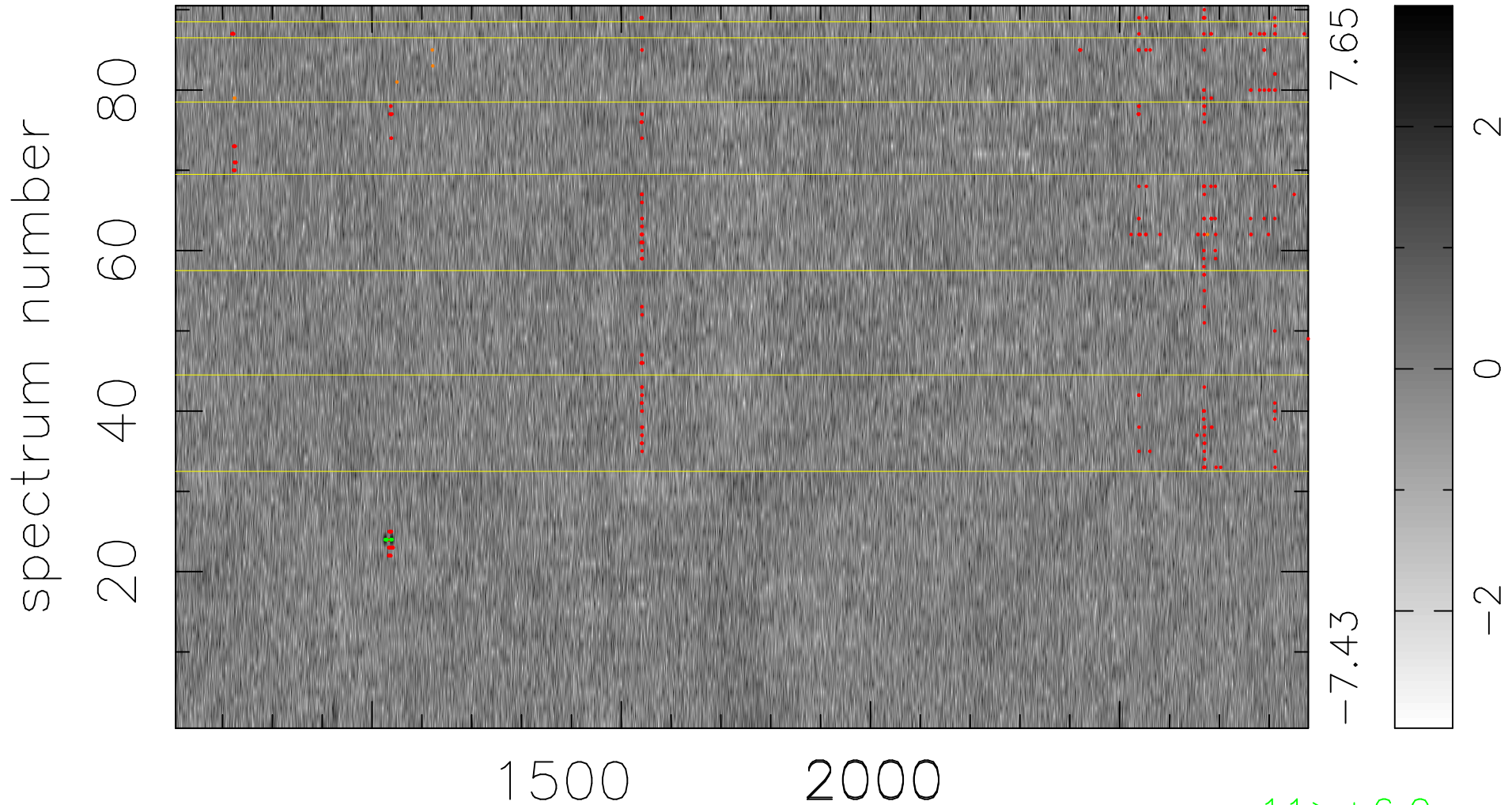


$$\chi(\lambda, t) = (\text{Data} - \text{Model AC}_5\text{F}) / \sigma \chi$$

$$\chi^2 / (409140 - 5298) = 0.981 \Rightarrow 1.007$$

4546x90



11 > +6.0σ

6 < -6.0σ

bad:295=0.072% λ (Å) z = 2.45314