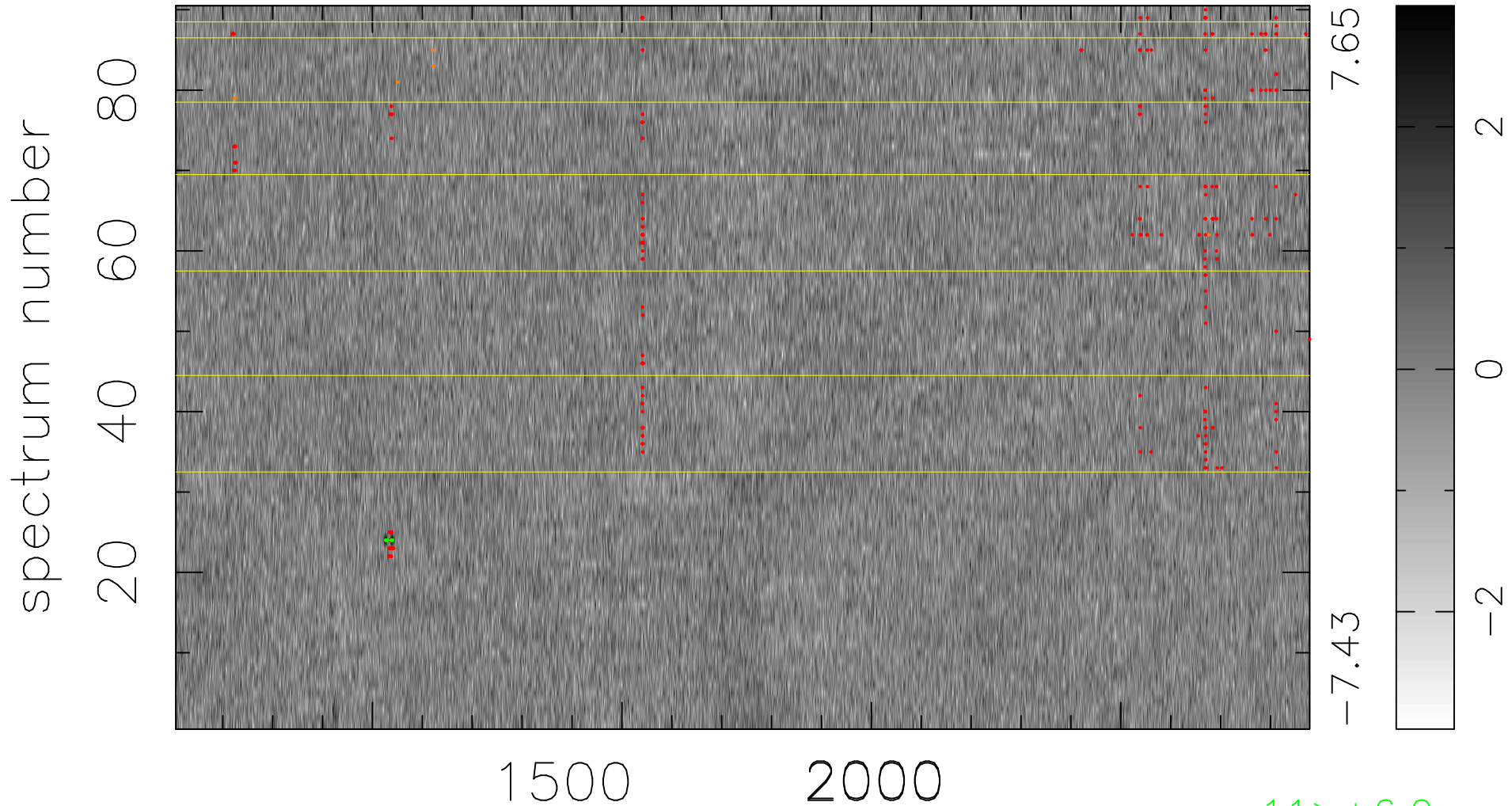


$$\chi(\lambda, t) = ( \text{Data} - \text{Model } AC_5 ) / \sigma \chi$$

$$\chi^2 / (409140 - 5208) = 0.981 \Rightarrow 1.007$$

4546x90



11 > +6.0σ

6 < -6.0σ

bad:295=0.072%    λ (Å)    z = 2.45314