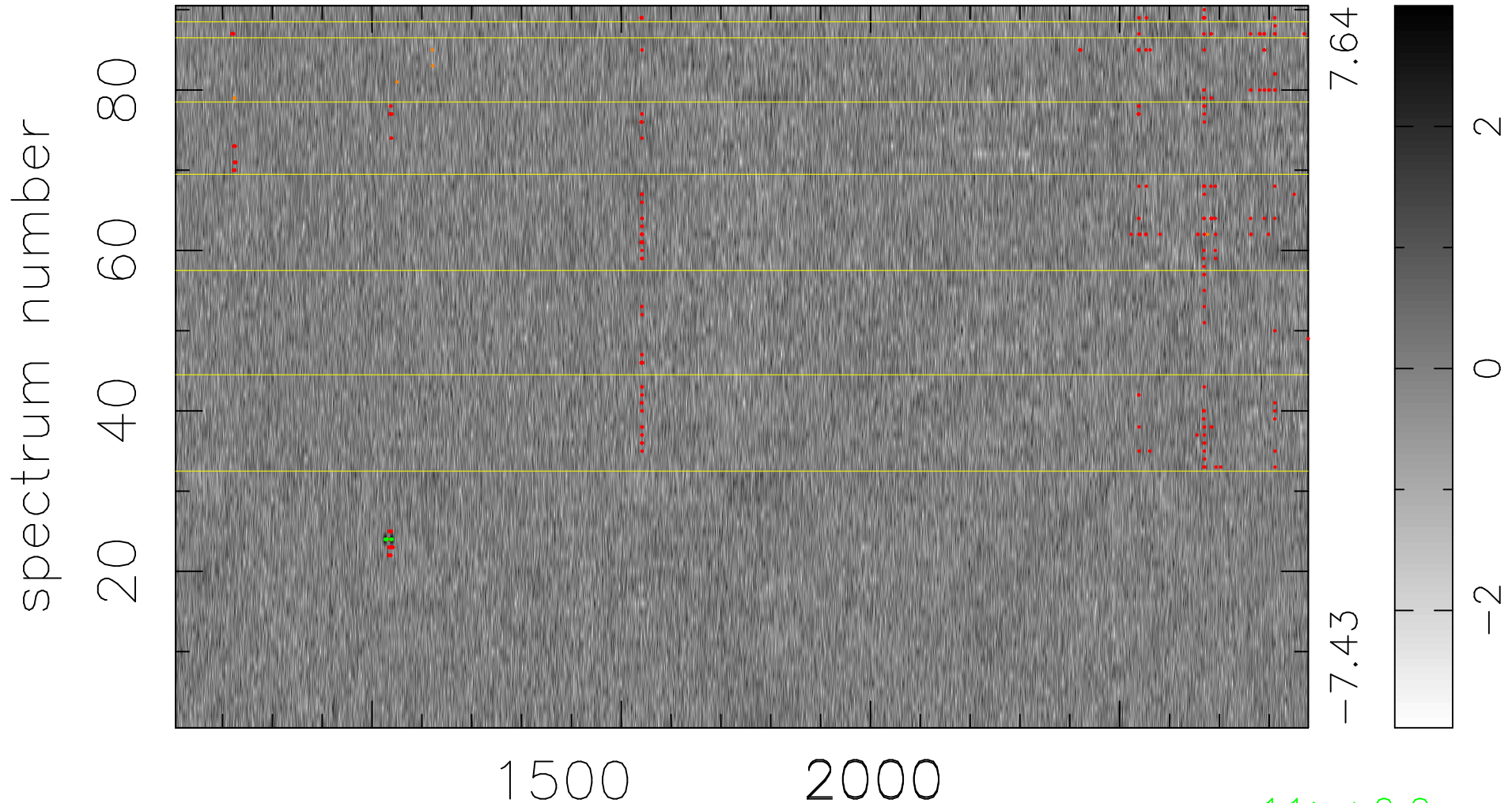


$$\chi(\lambda, t) = (\text{Data} - \text{Model } \text{AC}_5\text{B}_7\text{F}) / \sigma \chi$$

$$\chi^2 / (409140 - 5453) = 0.976 \Rightarrow 1.008$$

4546x90



bad:295=0.072% λ (Å) $z = 2.45314$

11 > +6.0 σ

6 < -6.0 σ