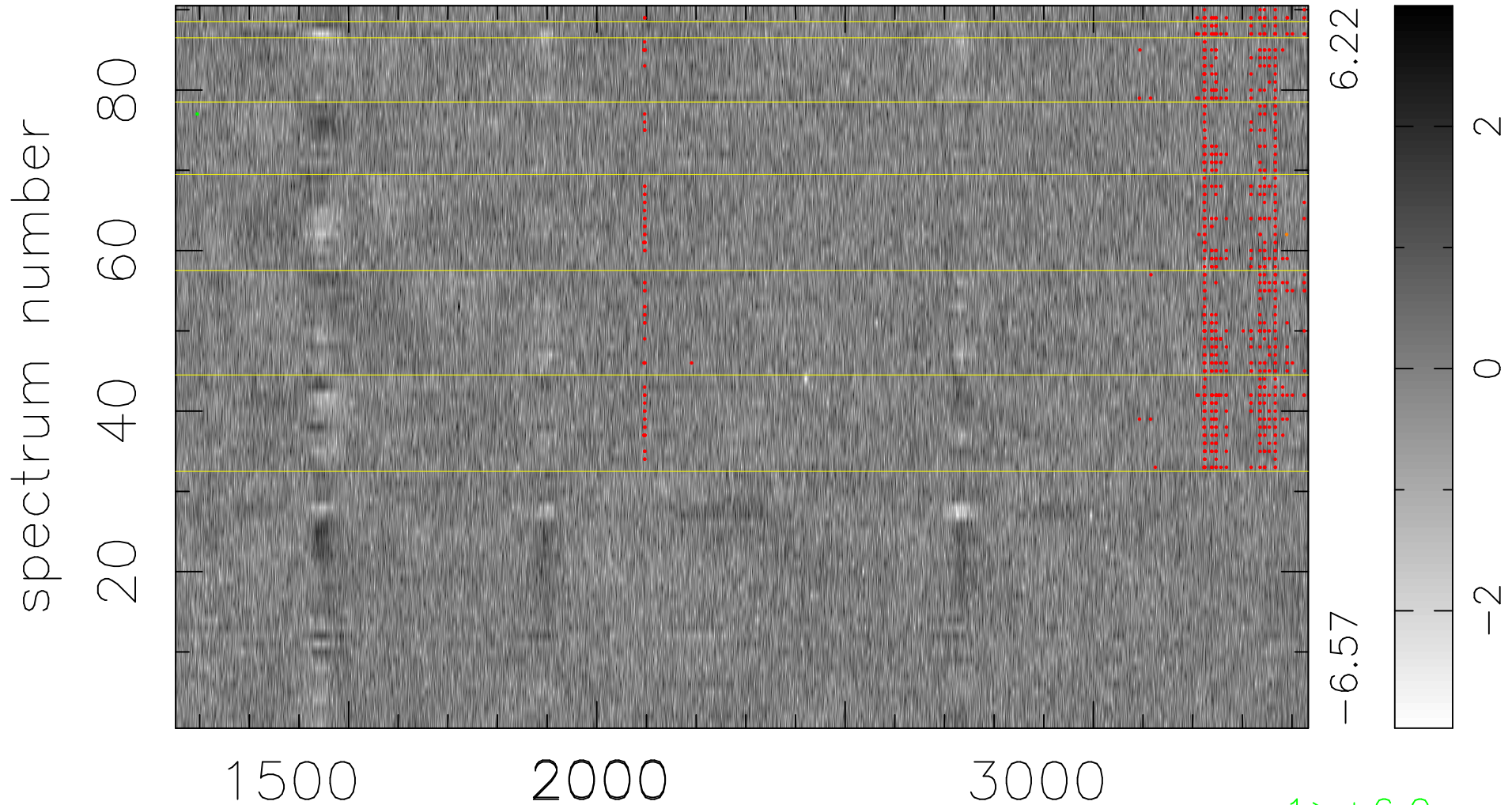


$$\chi(\lambda,t) = (\text{Data} - \text{Model } AC_5) / \sigma \chi$$

$$\chi^2 / (410670 - 5048) = 0.890 \Rightarrow 1.007$$

4563x90



bad:678=0.17%

λ (Å) $z = 1.67461$

1 > +6.0σ

1 < -6.0σ