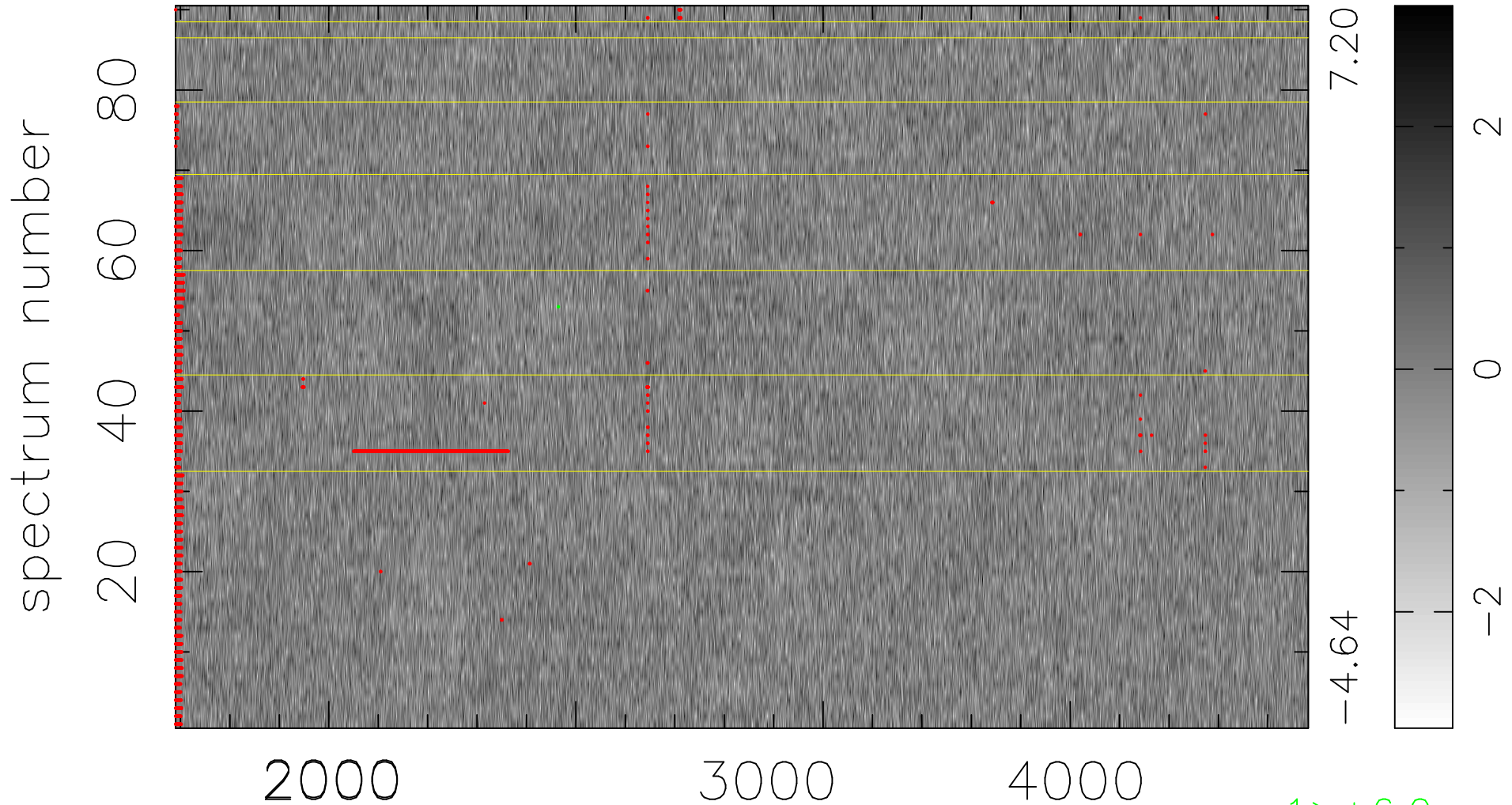


$$\chi(\lambda, t) = ( \text{Data} - \text{Model } \text{AC}_5\text{B}_4\text{F} ) / \sigma \chi$$

$$\chi^2 / (412560 - 5241) = 0.901 \Rightarrow 1.008$$

4584 × 90



bad:2429=0.59%  $\lambda$  (Å)  $z = 1.07715$

1 > +6.0 $\sigma$