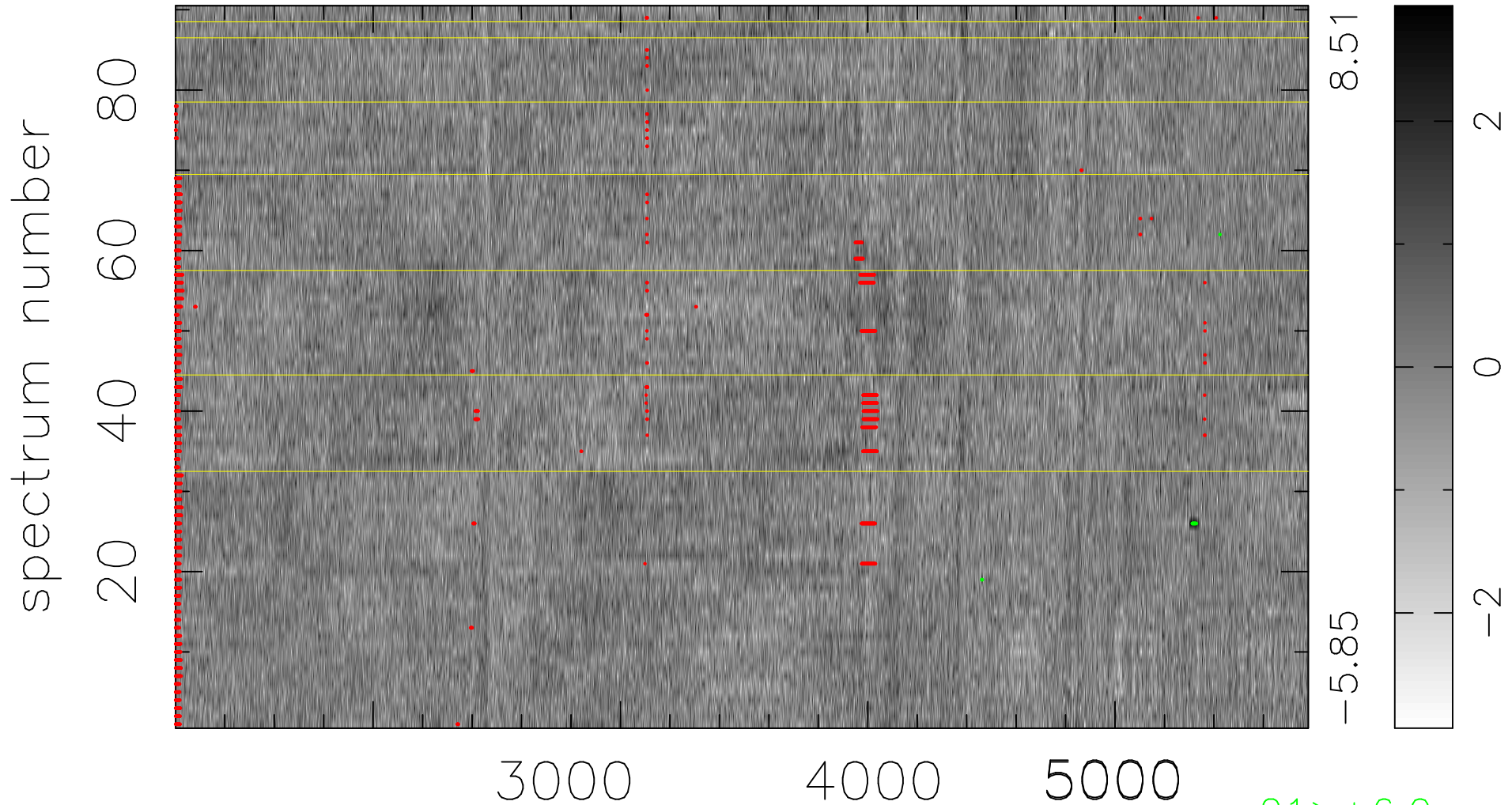


$$\chi(\lambda, t) = (\text{Data} - \text{Model } \text{AC}_5\text{B}_3\text{F}) / \sigma \chi$$

$$\chi^2 / (412290 - 5155) = 0.893 \Rightarrow 0.994$$

4581 × 90



21 > +6.0σ

bad:2230=0.54% λ (Å) z = 0.72098