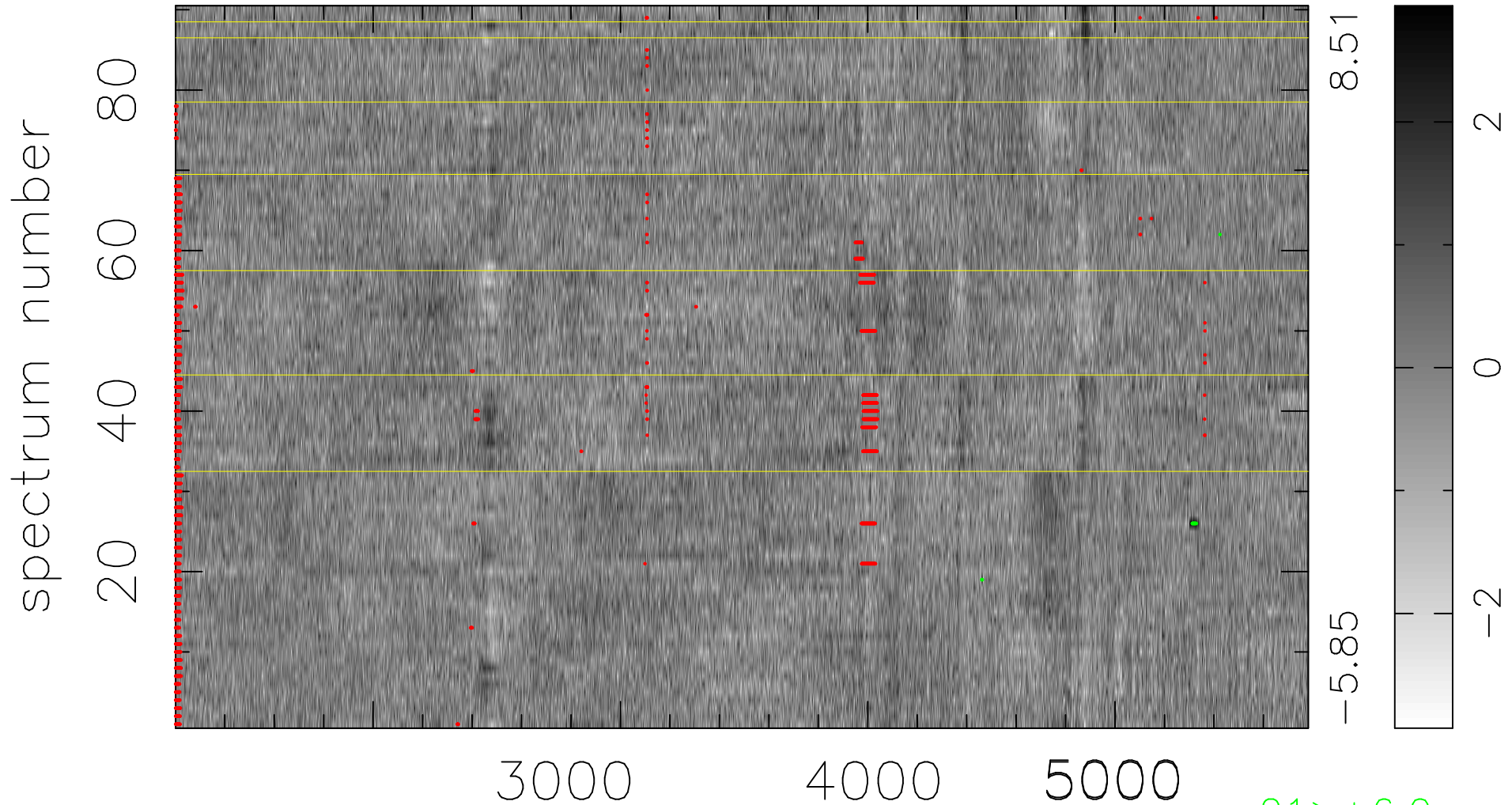


$$\chi(\lambda, t) = (\text{Data} - \text{Model AC}_5\text{F}) / \sigma \chi$$

$$\chi^2 / (412290 - 4971) = 0.908 \Rightarrow 0.994$$

4581 × 90



bad:2230=0.54% λ (Å) $z = 0.72098$

21 > +6.0 σ