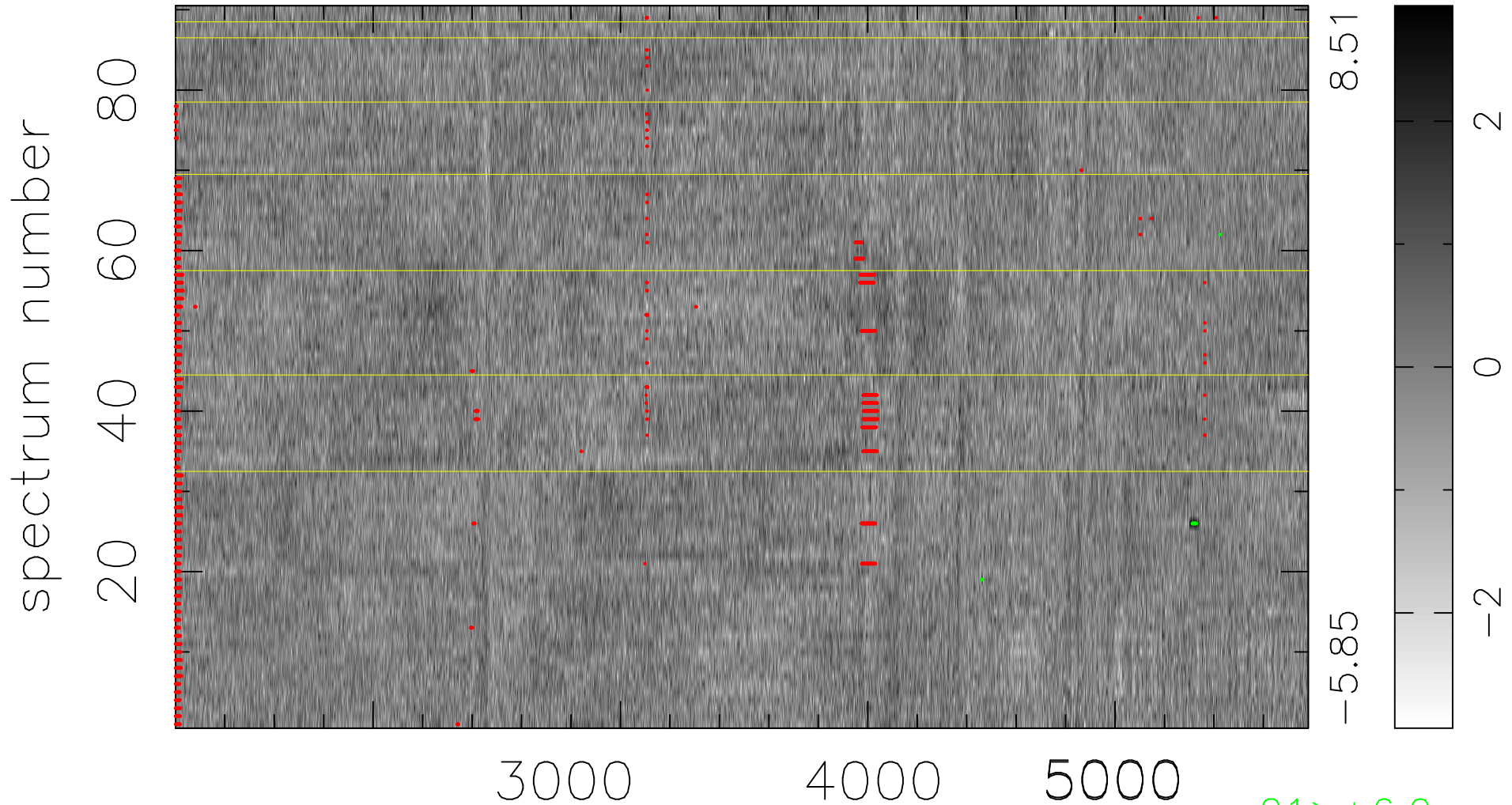


$$\chi(\lambda, t) = ( \text{Data} - \text{Model } \text{AC}_5\text{B}_3\text{F} ) / \sigma \chi$$

$$\chi^2 / (412290 - 5155) = 0.893 \Rightarrow 0.994$$

4581 × 90



bad:2230=0.54%  $\lambda$  (Å)  $z = 0.72098$

21 > +6.0 $\sigma$