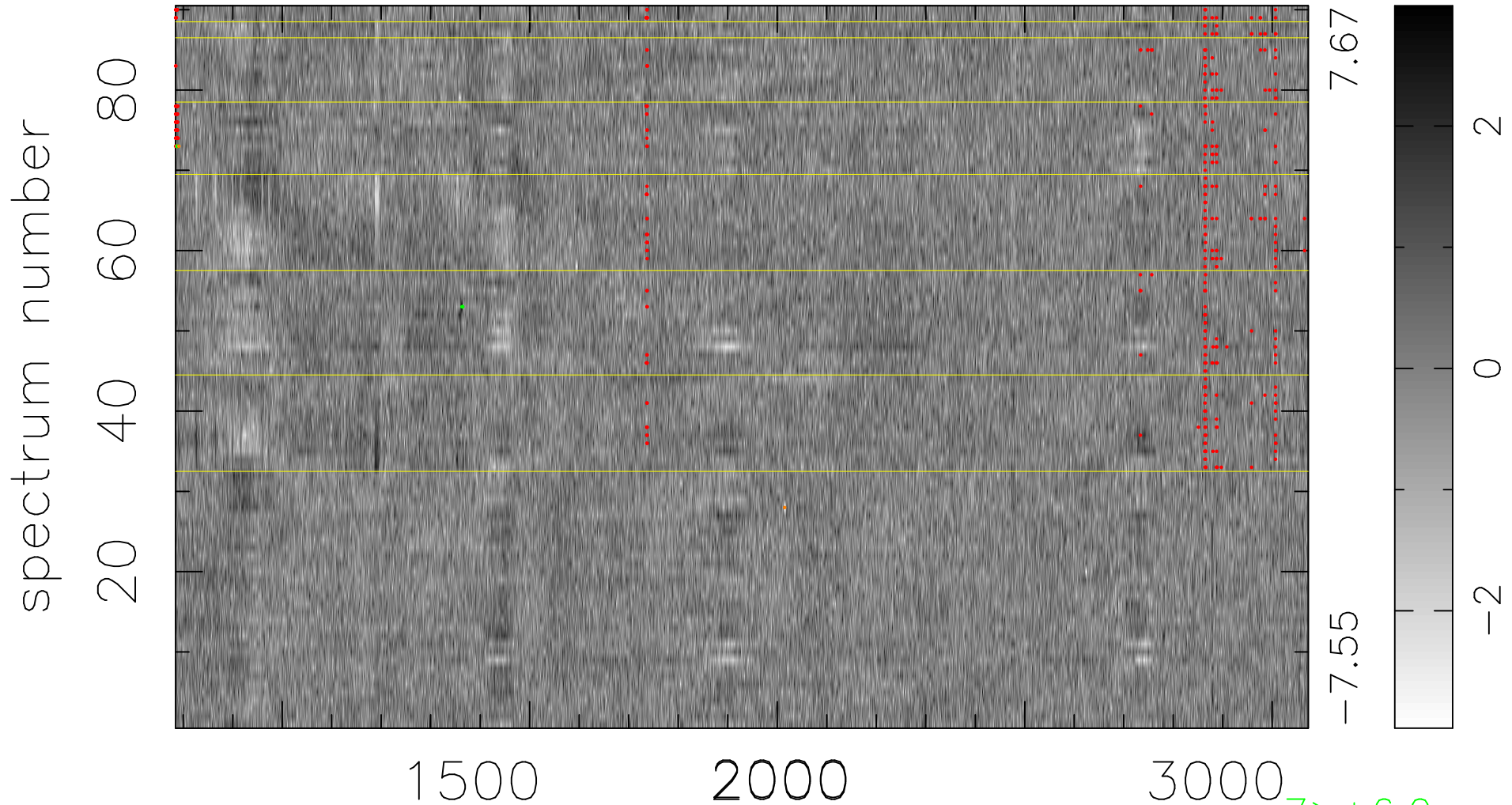


$$\chi(\lambda, t) = (\text{Data} - \text{Model AC}_5\text{F}) / \sigma \chi$$

$$\chi^2 / (411930 - 5339) = 0.951 \Rightarrow 1.007$$

4577x90



7.67

-7.55

2

0

-2

7 > +6.0σ

4 < -6.0σ

bad:381=0.092% λ (Å) z = 2.15616