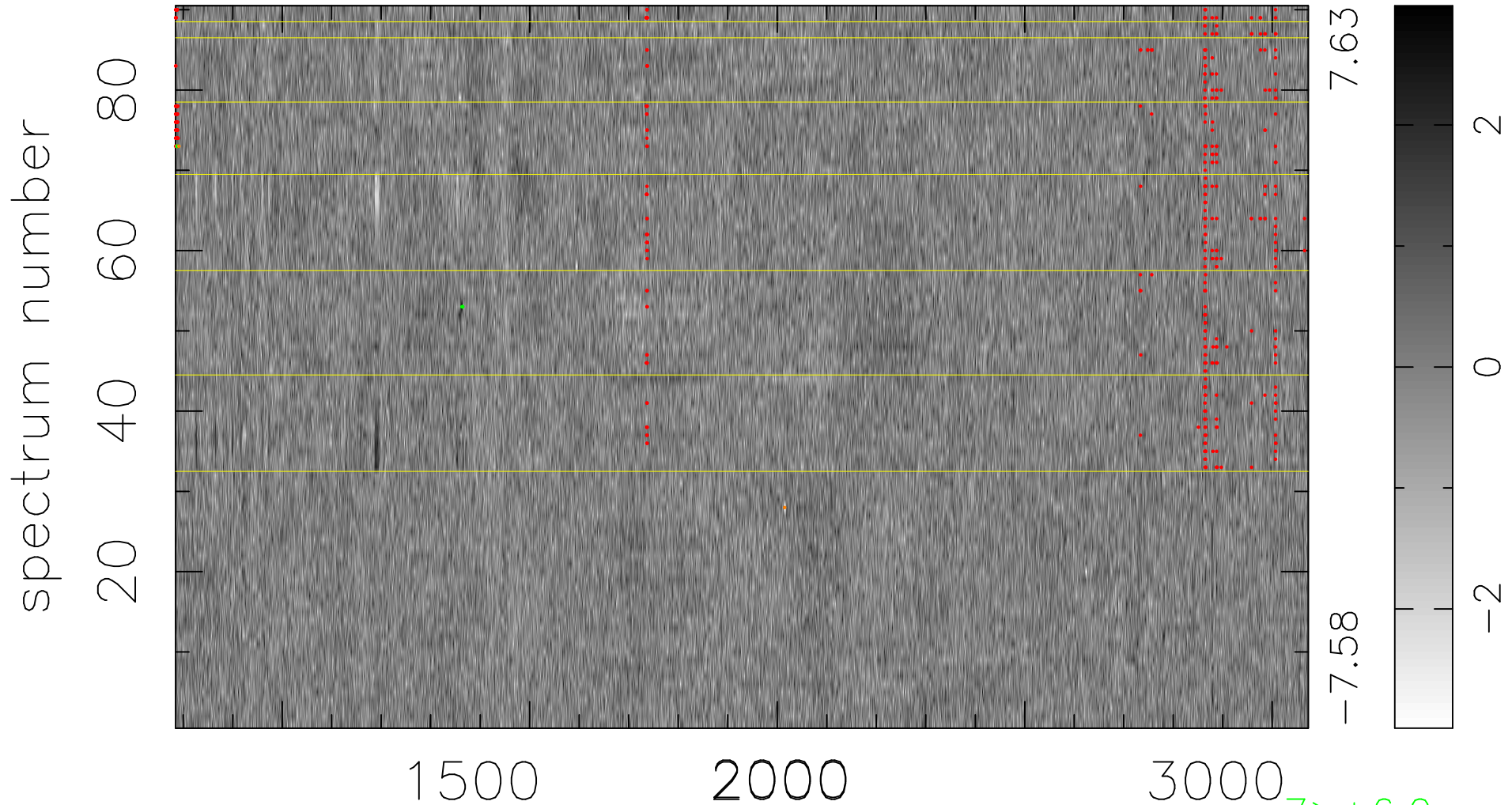


$$\chi(\lambda, t) = ( \text{Data} - \text{Model AC}_5\text{B}_7\text{F} ) / \sigma \chi$$

$$\chi^2 / (411930 - 5459) = 0.917 \Rightarrow 1.008$$

4577x90



bad:381=0.092%  $\lambda$  (Å)  $z = 2.15616$

7 > +6.0σ

4 < -6.0σ